

CASHMERE POLO CLUB®









“Presenting Cashmere Polo Club’s all new Fall Winter 2018 | 2019 Collection with a host of new designs and patterns, creatively fitted into some winter classics. The collection showcases some vibrant pullovers, cardigans, boleros, dresses, ponchos and shawls knitted by highly experienced knitters and using latest knitting machinery(Stoll). Carrying the legacy of 100% Cashmere Yarn from Italy since 2005, we’ve styled the winter wear with some exclusive necklines and a variety of hems. Both the men’s and women’s collections highlight the comfortable form that any winter clothing primarily offers, topped with a modish twist.This tailor-made collection is made using Italian yarn without any involvement of child labour and is sold by weight.”

**ASHOK JUSRUT | CEO**







## ALLAMANDA

### LADIES ROUND NECK RAGLAN SLEEVES PULLOVER

Stroll effortlessly on a chilly day with Allamanda. With casual sleeves and a round neck, treat yourself with a comfort-clothing day.

#### PRODUCT DETAILS

PRODUCT NAME	STYLE NUMBER	PLY	GAUGE	PRODUCT DESCRIPTION	STITCH	DESIGN	FIT	ACCESSORIES
Allamanda	F1096	3	5	Ladies round neck raglan sleeves pullover	Half cardigan	High low curve fashioning at fron	Regular	None

#### SIZE AND WEIGHT

SIZE	6/34	8/36	10/38	12/40	14/42	16/44	18/46	20/48	22/50
Weight* (gm)	310	330	350	370	390	410	430	450	470





## APRICOT

### LADIES V NECK MILANO LONG SLEEVE PULLOVER

Experience the form-embracing warmth with the perfect fitting of Apricot. Its V-neck and simplicity give it a vast versatility of being easily paired with anything and everything. This one is sure to leave you spoilt for choices.



#### SIZE AND WEIGHT

SIZE	6/34	8/36	10/38	12/40	14/42	16/44	18/46	20/48	22/50
Weight* (gm)	160	170	180	190	200	210	220	235	250

#### PRODUCT DETAILS

PRODUCT NAME	STYLE NUMBER	PLY	GAUGE	PRODUCT DESCRIPTION	STITCH	DESIGN	FIT	ACCESSORIES
Apricot	F2001	1	12	Ladies v neck milano long sleeve pullover	Plain Knit	Integrated Collar	Slim (we've used form embracing instead)	None



## ROSEMARY [TUNIC]

LADIES ROUND NECK WITH SEMI  
ROUNDED WELT FINISH TRUMPET SLEEVES  
RAGLAN PULLOVER

Make Rosemary your favourite evergreen casual tunic. Swing in style with the boat neck and trumpet sleeves, leaving people in awe of you.

### PRODUCT DETAILS

PRODUCT NAME	STYLE NUMBER	PLY	GAUGE	PRODUCT DESCRIPTION	STITCH	DESIGN	FIT	ACCESSORIES
Rosemary	F1065	1	7	Ladies round neck with semi rounded welt finish trumpet sleeves raglan pullover	loose plain knit	1*1 rib at cuff and welts and 2x2 ribs at collar	relaxed (implied)	None

### SIZE AND WEIGHT

SIZE	6/34	8/36	10/38	12/40	14/42	16/44	18/46	20/48	22/50
Weight* (gm)	130	140	150	160	170	185	200	215	230



## BIRCH

### LADIES BATWING, TURTLENECK WITH BISHOP SLEEVES PULLOVER

Celebrate the warmth that engulfs you as you wear Birch. The turtleneck and batwing sleeves bring out the elegance in you while you're at work.

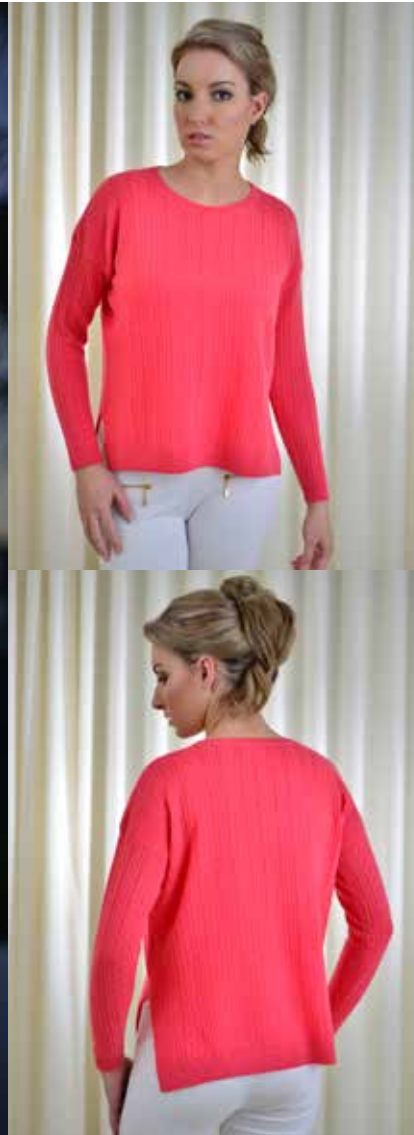


#### SIZE AND WEIGHT

SIZE	FREE
Weight* (gm)	375

#### PRODUCT DETAILS

PRODUCT NAME	STYLE NUMBER	PLY	GAUGE	PRODUCT DESCRIPTION	STITCH	DESIGN	FIT	ACCESSORIES
Birch	F1087	1	12	Ladies batwing, turtleneck with bishop sleeves pullover	1*1 Rib	Triangle like silhouette	Relaxed	None



## BIRD CHERRY

LADIES CREW NECK WITH SLITS AT SIDES,  
STRAIGHT ARMHOLE LONG SLEEVES PULLOVER

Bird Cherry brings in the light-hearted summer romance of lace into winters with its delicate lace stitches all over the soft cashmere. Allow yourself to simply go with the flow of its graceful round neckline and slits at the waist for extra convenience.

### PRODUCT DETAILS

PRODUCT NAME	STYLE NUMBER	PLY	GAUGE	PRODUCT DESCRIPTION	STITCH	DESIGN	FIT	ACCESSORIES
Bird Cherry	F1088	1	12	Ladies crew neck with slits at sides, straight armhole long sleeves pullover	Lace Leaf	High Low Slits with 1*1 Edge	Relaxed	None

### SIZE AND WEIGHT

SIZE	6/34	8/36	10/38	12/40	14/42	16/44	18/46	20/48	22/50
Weight* (gm)	180	190	200	210	225	240	255	270	285



## BUTTON WILLOW

LADIES CURLED EDGE ROUND NECK, BATWING STYLED WITH BRACELET SLEEVES PULLOVER

Sit-back and enjoy a windy evening by the beach with Button Willow. This comfortably soft round necked cashmere is knitted to emit a next-door friendly vibe.



### SIZE AND WEIGHT

SIZE	FREE
Weight* (gm)	230

### PRODUCT DETAILS

PRODUCT NAME	STYLE NUMBER	PLY	GAUGE	PRODUCT DESCRIPTION	STITCH	DESIGN	FIT	ACCESSORIES
Button Willow	F1094	1	12	Ladies curled edge neck, batwing styled with bracelet sleeves pullover	Plain Knit	Linked line at front and back	Relaxed	None



## COLUMBINE

### LADIES ROLL NECK PULLOVER

It's time to hold your head high with the supportive roll-neck of Columbine by your side. Thoughtfully crafted with a fully fashioned plain knit, Columbine is a dynamic addition to your winter wardrobe, giving you space to layer it with just about everything.

#### PRODUCT DETAILS

PRODUCT NAME	STYLE NUMBER	PLY	GAUGE	PRODUCT DESCRIPTION	STITCH	DESIGN	FIT	ACCESSORIES
Columbine	F1017	1	12	Ladies roll neck pullover	1*1 stitch at cuff welt and neck	Fully Fashioned plain knit	Slim	None

#### SIZE AND WEIGHT

SIZE	6/34	8/36	10/38	12/40	14/42	16/44	18/46	20/48	22/50
Weight* (gm)	185	190	205	215	230	245	260	275	290



## CORAL BELLS

### LADIES SLASH NECK PULLOVER, WITH ANGEL SLEEVES

Kick away all those winter blues with Coral Bells. With a stylish knit all over, slash neck and batwings, revel the pleasant feel while at work or at play.



#### SIZE AND WEIGHT

SIZE	FREE
Weight* (gm)	390

#### PRODUCT DETAILS

PRODUCT NAME	STYLE NUMBER	PLY	GAUGE	PRODUCT DESCRIPTION	STITCH	DESIGN	FIT	ACCESSORIES
Coral Bells	F8867	5	3	Ladies slash neck pullover, with angel sleeves	combined with loose and tight stitch	sleeve with self edge finish, 1*1 welt	Relaxed	None



## FLAMINGO

### LADIES TURTLENECK PONCHO 1\*1 RIB CUFF AND COLLAR

Indulge in the cozy and snug experience that Flamingo offers. With its warm turtleneck and 'let-it-loose' form, wander around on a busy winter street with a new-found confidence.

#### PRODUCT DETAILS

PRODUCT NAME	STYLE NUMBER	PLY	GAUGE	PRODUCT DESCRIPTION	STITCH	DESIGN	FIT	ACCESSORIES
Flamingo	F1082	2	7	Ladies turtleneck poncho 1*1 rib cuff and collar	Full rib	3 colors Jacquard all over, ending with self start	Relaxed	None

#### SIZE AND WEIGHT

SIZE	FREE
Weight* (gm)	460





## FOXGLOVES

### LADIES V NECK WITH LONG SLEEVES

Bring out your edgy side with the hand picot edge of Foxgloves. With an elegant V-neck and a plain knit all over, it is a winter essential; perfect for a regular day at work and for a movie night with friends.



#### SIZE AND WEIGHT

SIZE	6/34	8/36	10/38	12/40	14/42	16/44	18/46	20/48	22/50
Weight* (gm)	160	170	180	190	200	210	220	235	250

#### PRODUCT DETAILS

PRODUCT NAME	STYLE NUMBER	PLY	GAUGE	PRODUCT DESCRIPTION	STITCH	DESIGN	FIT	ACCESORIES
Foxgloves	F1015	1	12	Ladies v neck with long sleeves	Plain Knit	Hand picot at neck	Slim	None



## GLADILUS

### LADIES TURTLENECK WITH LONG SLEEVES PULLOVER

Appease your need of a homey pullover with Gladilus. The relaxed turtleneck and the cable knit all over brings out the grace and warmth in you.

#### PRODUCT DETAILS

PRODUCT NAME	STYLE NUMBER	PLY	GAUGE	PRODUCT DESCRIPTION	STITCH	DESIGN	FIT	ACCESSORIES
Gladilus	F1714	5	3	Ladies turtleneck with long sleeves pullover	Combined with reverse and plain	Cables in middle front, on back and sleeves and 3*3 Ribs at welt, Cuff and collar.	Slim	None

#### SIZE AND WEIGHT

SIZE	6/34	8/36	10/38	12/40	14/42	16/44	18/46	20/48	22/50
Weight* (gm)	410	430	450	470	490	510	530	550	570



## IVY

### LADIES TURTLENECK HALF SLEEVES PULLOVER

Turn the winter winds around to suit your style with Ivy. The spacious turtleneck gives you a warm snuggle and space for easy movement. Stand out from the crowd with this short-sleeved boxy pullover.



#### SIZE AND WEIGHT

SIZE	6/34	8/36	10/38	12/40	14/42	16/44	18/46	20/48	22/50
Weight* (gm)	510	530	550	570	590	610	630	650	670

#### PRODUCT DETAILS

PRODUCT NAME	STYLE NUMBER	PLY	GAUGE	PRODUCT DESCRIPTION	STITCH	DESIGN	FIT	ACCESORIES
Ivy	F1025	5	3	Ladies turtleneck half sleeves pullover	Combined with reverse and plain	Jumbo Cables all over, 1*1 Ribs at welt, cuff and collar	Relaxed	None



## ECHINOPS

### LADIES COWL NECK WITH BATWING SLEEVES

Lose yourself in the free-falling form and eye-catching pineapple stitch of Echinops. With its drooping cowl neck and spacious batwing sleeves, nothing comes in the way of your utmost comfort.

#### PRODUCT DETAILS

PRODUCT NAME	STYLE NUMBER	PLY	GAUGE	PRODUCT DESCRIPTION	STITCH	DESIGN	FIT	ACCESSORIES
Echinops	F1713	5	3	Ladies cowl neck with batwing sleeves	Pineapple stitch all over	Sleeves with turned back cuff	Relaxed	None

#### SIZE AND WEIGHT

SIZE	FREE
Weight* (gm)	730



## LEIA

### LADIES BOAT NECK PULLOVER WITH RAGLAN SLEEVES.

Brave the chilly winter winds with maximum confidence without losing out on style. Along with form-fitting comfort to keep you warm, Leia comes with a boat neck to enhance your elegance.



#### SIZE AND WEIGHT

SIZE	6/34	8/36	10/38	12/40	14/42	16/44	18/46	20/48	22/50
Weight* (gm)	380	400	420	440	460	480	505	530	555

#### PRODUCT DETAILS

PRODUCT NAME	STYLE NUMBER	PLY	GAUGE	PRODUCT DESCRIPTION	STITCH	DESIGN	FIT	ACCESSORIES
Leia	F 1734	3	5	Ladies boat neck pullover with raglan sleeves.	Half cardigan raglan sleeves pullover	High Low Curve	Regular	None



## LILAC

### LADIES CREW NECK LONG SLEEVES PULLOVER

Lilac is your go-to garment when you're looking for all day comfort. The plain knit and the crew neck are perfect to complement your easy style.

#### PRODUCT DETAILS

PRODUCT NAME	STYLE NUMBER	PLY	GAUGE	PRODUCT DESCRIPTION	STITCH	DESIGN	FIT	ACCESSORIES
Lilac	F1007	1	12	Ladies crew neck long sleeves pullover	Fully fashioned plain knit	Tubular at welt, cuff and collar	Slim	None

#### SIZE AND WEIGHT

SIZE	6/34	8/36	10/38	12/40	14/42	16/44	18/46	20/48	22/50
Weight* (gm)	160	170	180	190	205	220	235	250	265



## LILY

### LADIES TURTLENECK LONG SLEEVES PULLOVER

Lily's close-sitting turtleneck gives you the much-needed rosy glow in the middle of the biting cold winds of winter. With a pattern of fully fashioned cables all over, Lily will soon become your favourite part of the winter wardrobe.



#### SIZE AND WEIGHT

SIZE	6/34	8/36	10/38	12/40	14/42	16/44	18/46	20/48	22/50
Weight* (gm)	305	325	345	365	390	415	440	465	490

#### PRODUCT DETAILS

PRODUCT NAME	STYLE NUMBER	PLY	GAUGE	PRODUCT DESCRIPTION	STITCH	DESIGN	FIT	ACCESSORIES
Lily	F1008	3	5	Ladies turtleneck long sleeves pullover	Combined with reverse, plain and cables	Full cables all over 3*3 Rib at cuff,welt and collar	slim	None



## LUCIFER

### LADIES V NECK SADDLE SHOULDER LONG SLEEVES PULLOVER

With Lucifer comes its bold, dashing aura. The V neck and the picot edge together make you stand out in a crowd effortlessly.

#### PRODUCT DETAILS

PRODUCT NAME	STYLE NUMBER	PLY	GAUGE	PRODUCT DESCRIPTION	STITCH	DESIGN	FIT	ACCESSORIES
Lucifer	F1014	1	12	Ladies v neck saddle shoulder long sleeves pullover	Plain knit	Picot edge collar	slim	None

#### SIZE AND WEIGHT

SIZE	6/34	8/36	10/38	12/40	14/42	16/44	18/46	20/48	22/50
Weight* (gm)	160	170	180	190	205	220	235	250	265





## ORCHID

### LADIES DEEP V NECK LONG SLEEVES PULLOVER

Feel your elegant best with Orchid's simplicity and minimalist aesthetic. Redefining winter-wear with its plain knit and a simple V-neck, Orchid is a must-have essential for every woman.



#### SIZE AND WEIGHT

SIZE	6/34	8/36	10/38	12/40	14/42	16/44	18/46	20/48	22/50
Weight* (gm)	215	225	235	245	255	265	275	285	295

#### PRODUCT DETAILS

PRODUCT NAME	STYLE NUMBER	PLY	GAUGE	PRODUCT DESCRIPTION	STITCH	DESIGN	FIT	ACCESORIES
Orchid	F1013	1	12	Ladies deep v neck long sleeves pullover	plain knit	1*1 rib at welt, cuff and collar	slim	None



## PEACE LILY

### LADIES CREW NECK LONG SLEEVES PULLOVER

Make peace with working winter mornings with Peace Lily.  
Side slits give you just the right space to glide your way through the day.

#### PRODUCT DETAILS

PRODUCT NAME	STYLE NUMBER	PLY	GAUGE	PRODUCT DESCRIPTION	STITCH	DESIGN	FIT	ACCESSORIES
Peace Lily	F1089	1	12	Ladies crew neck long sleeves pullover	plain knit	slit at sides and cuffs, 1*1 rib at cuff, welt and collar, Outside linking at centre back panel	regular	None

#### SIZE AND WEIGHT

SIZE	6/34	8/36	10/38	12/40	14/42	16/44	18/46	20/48	22/50
Weight* (gm)	220	230	240	250	260	275	290	305	325



## POINSETIA

### LADIES FUNNEL NECK PULLOVER WITH LONG SLEEVES

Announce your arrival in style with the bold texture of cardigan stitch on Poinsetia. Every element of this pullover, from the funnel neck to roll-back sleeves, has been crafted to exhibit exclusivity at its best.



#### SIZE AND WEIGHT

SIZE	FREE
Weight* (gm)	670

#### PRODUCT DETAILS

PRODUCT NAME	STYLE NUMBER	PLY	GAUGE	PRODUCT DESCRIPTION	STITCH	DESIGN	FIT	ACCESORIES
Poinsetia	F1085	6	3	Ladies funnel neck pullover with long sleeves	full cardigan	1*1 rib all over	relaxed	None



## TULIP

LADIES BOAT NECK TURNED DOWN COLLAR  
WITH RAGLAN SLEEVES AND TURNED  
BACK CUFFS PULLOVER

Just like a bunch of blooming tulips, happily sway through your day with Tulip. With the elegant boat neck and turned back cuffs, saunter on a pleasant evening.

### PRODUCT DETAILS

PRODUCT NAME	STYLE NUMBER	PLY	GAUGE	PRODUCT DESCRIPTION	STITCH	DESIGN	FIT	ACCESSORIES
Tulip	F1039	2	7	Ladies boat neck turned down collar with raglan sleeves and turned back cuffs pullover	plain knit	2*2 rib high welt, cuff and neck	slim	None

### SIZE AND WEIGHT

SIZE	6/34	8/36	10/38	12/40	14/42	16/44	18/46	20/48	22/50
Weight* (gm)	280	300	320	340	360	390	420	450	480



## VERBENA

### LADIES ROUND NECK WITH CURLED EDGE LONG SLEEVES OVERSIZE PULLOVER

Verbena brings winter style with a little twist. The curly-edge round neckline perfectly represents both, your elegance and sparkling charm, at the same time. Throw it on for a sunny social affair for spacious comfort and warmth.



#### SIZE AND WEIGHT

SIZE	6/34	8/36	10/38	12/40	14/42	16/44	18/46
Weight* (gm)	175	200	225	250	275	300	325

#### PRODUCT DETAILS

PRODUCT NAME	STYLE NUMBER	PLY	GAUGE	PRODUCT DESCRIPTION	STITCH	DESIGN	FIT	ACCESSORIES
Verbena	F1083	1	12	Ladies round neck with curled edge long sleeves oversize pullover	aran knit	1*1 rib on welt, and sleeves	relaxed (implied)	None







## AMARYUS

### LADIES MOCK NECK FULL ZIP CARDIGAN

Exhibit the charm of an illusionist with the mock neck of Amaryus. With a convenient zipper at the front, Amaryus will easily become your winter-layering essential, ready to be paired with all sorts of tops, bottoms and boots.

#### PRODUCT DETAILS

PRODUCT NAME	STYLE NUMBER	PLY	GAUGE	PRODUCT DESCRIPTION	STITCH	DESIGN	FIT	ACCESSORIES
Amaryus	F1003	1	12	Ladies mock neck full zip cardigan	Plain knit fully fashioned	1*1 rib at welt, cuff and collar	Slim	ykk zipper

#### SIZE AND WEIGHT

SIZE	6/34	8/36	10/38	12/40	14/42	16/44	18/46	20/48	22/50
Weight* (gm)	225	235	245	255	265	280	295	310	325





## ANISE

### LADIES SHAWL NECK OPEN CARDIGAN WITH TURNED BACK CUFFS

Anise is your ideal companion for a chilly busy day. This throw-on has an easy-going collar with turned back cuffs, giving you a flawless look for the day.



#### SIZE AND WEIGHT

SIZE	6/34	8/36	10/38	12/40	14/42	16/44	18/46	20/48	22/50
Weight* (gm)	370	390	410	430	450	470	500	530	560

#### PRODUCT DETAILS

PRODUCT NAME	STYLE NUMBER	PLY	GAUGE	PRODUCT DESCRIPTION	STITCH	DESIGN	FIT	ACCESSORIES
Anise	F1086	2	5	Ladies shawl neck open cardigan with turned back cuffs	Full cardigan knit	full cardigan sttich all over	Regular	None



## ASIAN PEAR

### LADIES OPEN CARDIGAN WITH PATCH POCKETS AND LONG SLEEVES

Asian Pear brings a fresh pop of colour into your grey and dry winters. Equipped with pockets to keep your hands warm and hold some essentials, Asian Pear gives you the poise to step out with an air of self-pride.

#### PRODUCT DETAILS

PRODUCT NAME	STYLE NUMBER	PLY	GAUGE	PRODUCT DESCRIPTION	STITCH	DESIGN	FIT	ACCESSORIES
Asian Pear	F1098	2	7	Ladies open cardigan with patch pockets and long sleeves	linked	slits at side 1*1 rib on welt and cuff	regular	None

#### SIZE AND WEIGHT

SIZE	6/34	8/36	10/38	12/40	14/42	16/44	18/46	20/48	22/50
Weight* (gm)	285	300	315	335	355	375	395	415	435



## BELL FLOWER

### LADIES FULL ZIP HOODED CARDIGAN WITH KANGAROO POCKET

Envelop yourself with the cozy feel of Bell Flower. The full zip with hood and pockets make it the apt clothing that you can carry effortlessly anywhere.



#### SIZE AND WEIGHT

SIZE	6/34	8/36	10/38	12/40	14/42	16/44	18/46	20/48	22/50
Weight* (gm)	265	280	295	310	325	340	355	370	385

#### PRODUCT DETAILS

PRODUCT NAME	STYLE NUMBER	PLY	GAUGE	PRODUCT DESCRIPTION	STITCH	DESIGN	FIT	ACCESSORIES
Bell flower	F1080	1	12	Ladies full zip hooded cardigan with kangaroo pocket	plain knit	1*1 rib at welt and cuff	Regular	ykk zipper



## CROCUS

### LADIES MOCK NECK CARDIGAN WITH LONG SLEEVES

Adorn elegance like never before with Crocus. This buttoned mock neck with a fashionable knit is precisely made for your get-togethers and other events.

#### PRODUCT DETAILS

PRODUCT NAME	STYLE NUMBER	PLY	GAUGE	PRODUCT DESCRIPTION	STITCH	DESIGN	FIT	ACCESSORIES
Crocus	F1006	3	5	Ladies mock neck cardigan with long sleeves	plain knit	tubular welt, 2*2 rib at cuff and collar	slim	flat buttons

#### SIZE AND WEIGHT

SIZE	6/34	8/36	10/38	12/40	14/42	16/44	18/46	20/48	22/50
Weight* (gm)	380	400	420	440	460	490	520	550	580



## DAHLIA

### LADIES V NECK CARDIGAN WITH TWO PATCH POCKETS

Evoke a feeling of freshness on a busy morning with Dahlia. Breathe in the serenity of the classic knit and pockets, that lets you blissfully enjoy your day.



#### SIZE AND WEIGHT

SIZE	6/34	8/36	10/38	12/40	14/42	16/44	18/46	20/48	22/50
Weight* (gm)	190	200	210	225	240	255	270	285	300

#### PRODUCT DETAILS

PRODUCT NAME	STYLE NUMBER	PLY	GAUGE	PRODUCT DESCRIPTION	STITCH	DESIGN	FIT	ACCESSORIES
Dahlia	F1036	1	12	Ladies V neck cardigan with two patch pockets	plain knit	1*1 rib at welt and cuff	slim	Shell buttons



## FABIOLA

### LADIES LONG CARDIGAN WITH BELT AND CUFF SLEEVES

Fabiola adds the perfect amount of grace and elegance to any outfit. The long plain moss stitch hemline with the belt gives you the versatility of wearing it open on a go-with-the-flow kind of a day or fastening it together when you have your hands full.

#### PRODUCT DETAILS

PRODUCT NAME	STYLE NUMBER	PLY	GAUGE	PRODUCT DESCRIPTION	STITCH	DESIGN	FIT	ACCESSORIES
Fabiola	F1710	1	12	Ladies long cardigan with belt and cuff sleeves	plain knit	1*1 rib cuff and rice stitch at welt	regular	None

#### SIZE AND WEIGHT

SIZE	6/34	8/36	10/38	12/40	14/42	16/44	18/46	20/48	22/50
Weight* (gm)	320	330	345	360	375	390	405	420	440



## FLORA

### LADIES V NECK CARDIGAN WITH LONG SLEEVES

This winter layering with cable knit and the traditional V neck saves your day when you need a balance of warmth and style. Relax in the pleasant aura of Flora while you gracefully glide through the day.



#### SIZE AND WEIGHT

SIZE	6/34	8/36	10/38	12/40	14/42	16/44	18/46	20/48	22/50
Weight* (gm)	340	355	370	385	400	420	440	460	480

#### PRODUCT DETAILS

PRODUCT NAME	STYLE NUMBER	PLY	GAUGE	PRODUCT DESCRIPTION	STITCH	DESIGN	FIT	ACCESSORIES
Flora	F1030	3	5	Ladies V neck cardigan with long sleeves	combined with reverse, plain and cables all over.	3*3 rib at welt and cuff	regular	concave shell buttons



## FUSHIA

### LADIES SHAWL NECK, TWO BUTTON CARDIGAN

Exhibit the strong influence of power-dressing combined with the charm of warmth, in the shawl neck and elegant fitting of Fushia. Button it up and add on a scarf for a more professional look, or layer it with a long winter overcoat.

#### PRODUCT DETAILS

PRODUCT NAME	STYLE NUMBER	PLY	GAUGE	PRODUCT DESCRIPTION	STITCH	DESIGN	FIT	ACCESSORIES
Fushia	F1033	1	12	Ladies shawl neck, two button cardigan.	fully fashioned plain knit	full rib placket	slim	concave hole shell buttons

#### SIZE AND WEIGHT

SIZE	6/34	8/36	10/38	12/40	14/42	16/44	18/46	20/48	22/50
Weight* (gm)	240	250	270	290	310	330	350	370	390





## GARDENIA

### LADIES V NECK CARDIGAN

Sparkle your day with Cardenia's fresh look. The plain knit enables you to make a fashion statement without doing much, thus making you stand out.



#### SIZE AND WEIGHT

SIZE	6/34	8/36	10/38	12/40	14/42	16/44	18/46	20/48	22/50
Weight* (gm)	175	190	205	220	230	240	260	280	300

#### PRODUCT DETAILS

PRODUCT NAME	STYLE NUMBER	PLY	GAUGE	PRODUCT DESCRIPTION	STITCH	DESIGN	FIT	ACCESORIES
Gardenia	F1032	1	12	Ladies V neck cardigan	Fully fashioned plain knit	Tubular welt and cuff with inner contrast	slim	Concave shell button with 2 holes



## JADE

### LADIES OPEN CARDIGAN WITH TWO PATCH POCKETS

Wrap around the best of winter coziness in Jade. Its open front, fold back sleeves and solid pattern of plain knits makes it your perfect partner-in-comfort for the entire season.

#### PRODUCT DETAILS

PRODUCT NAME	STYLE NUMBER	PLY	GAUGE	PRODUCT DESCRIPTION	STITCH	DESIGN	FIT	ACCESSORIES
Jade	F1084	3	5	Ladies open cardigan with two patch pockets	plain knit	2*2 at cuff, welt and pocket ribs finish	regular	None

#### SIZE AND WEIGHT

SIZE	FREE
Weight* (gm)	475



## MORNING GLORY

### LADIES SHAWL NECK OPEN CARDIGAN WITH LONG SLEEVES

Glorify your mornings with the super- stylish Morning Glory. The cables in the front and plain knit on the back in the form of a shawl cardigan is like a breath of fresh air on a dull day.



#### SIZE AND WEIGHT

SIZE	6/34	8/36	10/38	12/40	14/42	16/44	18/46	20/48	22/50
Weight* (gm)	300	325	350	375	400	425	450	475	500

#### PRODUCT DETAILS

PRODUCT NAME	STYLE NUMBER	PLY	GAUGE	PRODUCT DESCRIPTION	STITCH	DESIGN	FIT	ACCESORIES
Morning Glory	F1035	3	5	Ladies shawl neck open cardigan with long sleeves	combined with reserve, plain and chunky cables at front	1*1 at cuff and welt	regualr	none



## SPIREA

### LADIES ROUND NECK CARDIGAN

Spirea is here to live up to all your expectations. Its simple round neck, form-fitting silhouette and carefully selected buttons give you a piece that you can rely on throughout the season.

#### PRODUCT DETAILS

PRODUCT NAME	STYLE NUMBER	PLY	GAUGE	PRODUCT DESCRIPTION	STITCH	DESIGN	FIT	ACCESSORIES
Spirea	F2030	1	12	Ladies round neck cardigan	plain knit	1*1 at cuff and welt	slim	Shell button with 2 holes

#### SIZE AND WEIGHT

SIZE	6/34	8/36	10/38	12/40	14/42	16/44	18/46	20/48	22/50
Weight* (gm)	180	190	200	215	230	245	260	275	290



## SPRING IRIS

### LADIES OPEN CARDIGAN WITH DOLMAN SLEEVES

Lift your spirits with this uniquely styled Spring Irish. This open layering is completely easy to carry and yet possesses the coziness of cashmere.



#### SIZE AND WEIGHT

SIZE	FREE
Weight* (gm)	435

#### PRODUCT DETAILS

PRODUCT NAME	STYLE NUMBER	PLY	GAUGE	PRODUCT DESCRIPTION	STITCH	DESIGN	FIT	ACCESSORIES
Spring Iris	F8821	4	3	Ladies open cardigan with dolman sleeves	Half Cardigan knit	2*2 at cuff and 1*1 welt	regular	None



## SWISS CHARD

### LADIES OPEN CARDIGAN

Get ready to make a statement upon your arrival. The bold craftsmanship of Swiss Chard will give you nothing less than a cinematic experience with its edgy hem and neckline.

#### PRODUCT DETAILS

PRODUCT NAME	STYLE NUMBER	PLY	GAUGE	PRODUCT DESCRIPTION	STITCH	DESIGN	FIT	ACCESSORIES
Swiss Chard	F1095	1	12	Ladies open cardigan	fully fashioned, plain knit	1*1 at cuff and tubular welt and placket	regular	None

#### SIZE AND WEIGHT

SIZE	6/34	8/36	10/38	12/40	14/42	16/44	18/46	20/48	22/50
Weight* (gm)	250	270	290	310	330	350	370	390	410



## THYME

### LADIES OPEN SHAWL NECK BOLERO CARDIGAN

Like a bunch of blooming Thyme in spring, blossom through your day at work or at play. This throw-on is just what you need on an easy-breezy winter day.



#### SIZE AND WEIGHT

SIZE	6/34	8/36	10/38	12/40	14/42	16/44	18/46	20/48	22/50
Weight* (gm)	280	295	310	325	345	365	385	405	425

#### PRODUCT DETAILS

PRODUCT NAME	STYLE NUMBER	PLY	GAUGE	PRODUCT DESCRIPTION	STITCH	DESIGN	FIT	ACCESSORIES
Thyme	F1067	2	7	Ladies open shawl neck bolero cardigan	Fully fashioned plain knit	2*2 at cuff,welt, front panel	regualr	none



## ZINNIA

### LADIES V NECK CARDIGAN WITH BUTTONS

Bring on some vintage charm with the chunky cable knit and the bold V-neck of Zinnia. With the soft form-fitting structure, be sure to experience a boost in your confidence and an enhancement in your posture.

#### PRODUCT DETAILS

PRODUCT NAME	STYLE NUMBER	PLY	GAUGE	PRODUCT DESCRIPTION	STITCH	DESIGN	FIT	ACCESSORIES
Zinnia	F1002	1	12	Ladies V neck cardigan with buttons	Fully fashioned plain knit	twisted cable pattern all over	slim	Shell Buttons

#### SIZE AND WEIGHT

SIZE	6/34	8/36	10/38	12/40	14/42	16/44	18/46	20/48	22/50
Weight* (gm)	190	200	210	220	230	245	260	275	290





## CELOSIA

### LADIES OPEN FRONT CARDIGAN WITH A FLOWY WATERFALL FRONT HEM AND LONG SLEEVES

Carve your own way through the ordinary with Celosia. This unconventionally styled poncho with sleeves and a plain knit is your perfect throw-on that adds style and confidence to your personality.



#### SIZE AND WEIGHT

SIZE	6/34	8/36	10/38	12/40	14/42	16/44	18/46	20/48	22/50
Weight* (gm)	310	330	350	370	390	410	430	450	470

#### PRODUCT DETAILS

PRODUCT NAME	STYLE NUMBER	PLY	GAUGE	PRODUCT DESCRIPTION	STITCH	DESIGN	FIT	ACCESORIES
Celosia	F1710	1	12	Ladies open front cardigan with a flowy waterfall front hem and long sleeves	plain knit	tubular at welt and cuff	slim	None







## LIATRIS

LADIES OPEN FRONT CARDIGAN WITH BELT,  
LONG SLEEVES AND SHAWL COLLAR.

Longer than the average bolero and with the added accessory of a belt, Liatris adds a little twist to your regular winter wear with its versatility and the bold chunky pattern. Its unique craftsmanship has been especially designed to let your individuality shine out.

### PRODUCT DETAILS

PRODUCT NAME	STYLE NUMBER	PLY	GAUGE	PRODUCT DESCRIPTION	STITCH	DESIGN	FIT	ACCESSORIES
Liatis	F1707	3	5	Ladies open front cardigan with belt, long sleeves and shawl collar.	jumbo cables at front and sleeves combined with plain knit all over.	1*1 rib at cuff	slim	None

### SIZE AND WEIGHT

SIZE	6/34	8/36	10/38	12/40	14/42	16/44	18/46	20/48	22/50
Weight* (gm)	570	600	630	660	690	720	750	780	810



## AYANNA L

### LADIES BOLERO STYLE WITH DOLMAN SLEEVES

Kick away the wintry chills with the warmth and comfort of Ayanna L. The fitted sleeves with the uniquely crafted form makes you stand out and feel special.



#### SIZE AND WEIGHT

SIZE	6/34	8/36	10/38	12/40	14/42	16/44
Weight* (gm)	290	310	340	370	400	430

#### PRODUCT DETAILS

PRODUCT NAME	STYLE NUMBER	PLY	GAUGE	PRODUCT DESCRIPTION	STITCH	DESIGN	FIT	ACCESORIES
Ayanna L	F1708	1	12	Ladies bolero style with dolman sleeves	plain knit	1*1 rib at cuff and curled edge finish all round	slim	None



## NEVADA

### LADIES BALLET WRAP, BOLERO SHAWL NECK WITH FRILL SLEEVES

Perfectly complementing your style,  
Nevada is knitted to turn heads everyday.  
The ruffled open collar ending with the knot brings out your  
grace and chic at the same time.

#### PRODUCT DETAILS

PRODUCT NAME	STYLE NUMBER	PLY	GAUGE	PRODUCT DESCRIPTION	STITCH	DESIGN	FIT	ACCESSORIES
Nevada	F1037	2	7	Ladies ballet wrap, bolero shawl neck with frill sleeves	Plain knit	Plain knit at cuff and welt, finished with a full cardigan stitch at front placket	Semi slim	None

#### SIZE AND WEIGHT

SIZE	6/34	8/36	10/38	12/40	14/42	16/44	18/46	20/48	22/50
Weight* (gm)	220	230	240	250	270	290	310	330	350











## BIRD OF PARADISE

### LADIES DEEP V NECK FITTED DRESS

This deep V-neck fitted dress is designed to catch the attention of your peers. Don't let winters make you look ordinary in an event where you are meant to shine.

#### PRODUCT DETAILS

PRODUCT NAME	STYLE NUMBER	PLY	GAUGE	PRODUCT DESCRIPTION	STITCH	DESIGN	FIT	ACCESSORIES
Bird Of Paradise	F1004	1	12	Ladies deep v neck fitted dress	Fully fashioned plain knit all over.	1*1 at cuff and welt with a high base	Slim	None

#### SIZE AND WEIGHT

SIZE	6/34	8/36	10/38	12/40	14/42	16/44	18/46	20/48	22/50
Weight* (gm)	220	240	260	280	300	320	340	360	380



## LOTUS

### LADIES MOCK NECK DRESS WITH BUTTONS AT RIGHT ARMHOLES OPENING WITH RAGLAN SLEEVES

Turn a new petal of winter elegance with the unique craftsmanship of Lotus. Its mock neck and the twist of buttons at armhole openings give you the bliss of comfort and style together in one outfit.

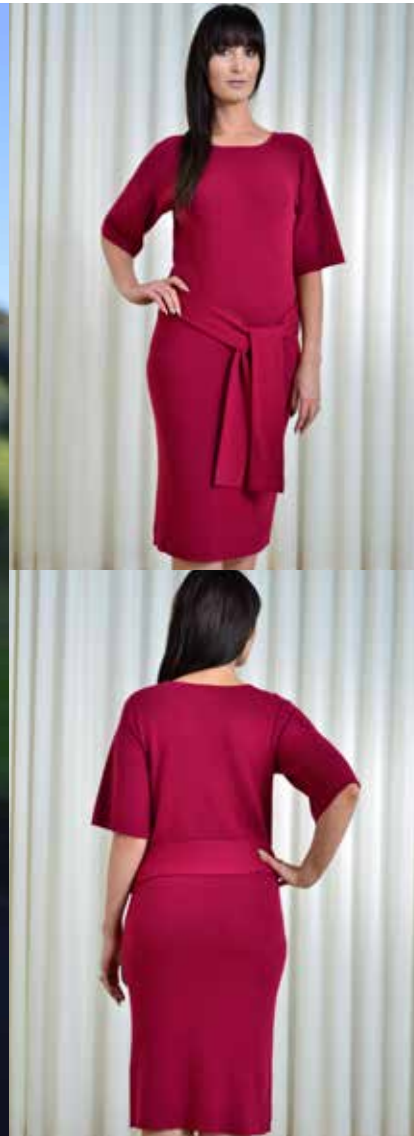


#### SIZE AND WEIGHT

SIZE	6/34	8/36	10/38	12/40	14/42	16/44	18/46	20/48	22/50
Weight* (gm)	400	410	425	440	455	475	495	515	535

#### PRODUCT DETAILS

PRODUCT NAME	STYLE NUMBER	PLY	GAUGE	PRODUCT DESCRIPTION	STITCH	DESIGN	FIT	ACCESORIES
Lotus	F1026	1	12	Ladies mock neck dress with buttons at right armholes opening with raglan sleeves	Fully fashioned, 1x1 knit all over	1*1 knit all over with 2*2 rib at neck	Slim	Diamond style buttons



## CHRISTMAS BELL

### LADIES BELTED DRESS WITH BELL SLEEVES

Carry a sense of pride and elegance with the chic Christmas Bell. The belt along with the stylish sleeves enable you to switch to your happy-go-lucky mode.

#### PRODUCT DETAILS

PRODUCT NAME	STYLE NUMBER	PLY	GAUGE	PRODUCT DESCRIPTION	STITCH	DESIGN	FIT	ACCESSORIES
Christmas Bell	F1711	1	12	Ladies belted dress with bell sleeves	1*1 knit all over	1*1 knit all over with an assorted belt	semi slim	None

#### SIZE AND WEIGHT

SIZE	6/34	8/36	10/38	12/40	14/42	16/44	18/46	20/48	22/50
Weight* (gm)	450	475	500	525	550	575	600	625	650



## LAELIA

### LADIES BOAT NECK DRESS WITH TURNED DOWN COLLAR AND RAGLAN SLEEVES

Brave the chilly winter winds with maximum confidence without losing out on style. Along with form-fitting comfort to keep you warm, Laelia comes with a boat neck to enhance your elegance.



#### SIZE AND WEIGHT

SIZE	6/34	8/36	10/38	12/40	14/42	16/44	18/46	20/48	22/50
Weight* (gm)	275	290	305	320	340	360	380	400	420

#### PRODUCT DETAILS

PRODUCT NAME	STYLE NUMBER	PLY	GAUGE	PRODUCT DESCRIPTION	STITCH	DESIGN	FIT	ACCESORIES
Laelia	F1029	1	12	Ladies boat neck dress with turned own collar and raglan sleeves	plain knit	2*2 at cuff ,welt with a seven gauge knitted collar	Slim	None



## BEGONIA

### LADIES COWL NECK WITH TRUMPET SLEEVES AND BELT

Allow yourself to let loose with the maximized comfort of Begonia. The cowl neck sits snugly around your neck, while the angular trumpet sleeves and the belt sprinkle a sophisticated appeal to your outfit.

#### PRODUCT DETAILS

PRODUCT NAME	STYLE NUMBER	PLY	GAUGE	PRODUCT DESCRIPTION	STITCH	DESIGN	FIT	ACCESSORIES
Begonia	F1045	1	12	Ladies cowl neck with trumpet sleeves and belt	Fully fashioned plain knit	Tube at cuff,welt. Collar combined with Plain knit and 1*1	Slim	None

#### SIZE AND WEIGHT

SIZE	6/34	8/36	10/38	12/40	14/42	16/44	18/46	20/48	22/50
Weight* (gm)	285	300	315	330	350	370	390	410	430



## FORGET ME NOT

LADIES FUNNEL NECK PULLOVER WITH LONG SLEEVES,  
SHAWL AND CLASSIC SKIRT KNEE LENGTH

Make an unforgettable appearance everywhere you go with the distinctive charm of Forget Me Not. The cozy funnel neck keeps you warm while the added shawl drapes effortlessly to give an illusion of layering.



### SIZE AND WEIGHT

SIZE	6/34	8/36	10/38	12/40	14/42	16/44	18/46	20/48	22/50
Weight* (gm)	300	325	350	375	405	435	465	495	525
Weight* (gm)	430								
Weight* (gm)	195	210	225	240	260	280	300	320	340

### PRODUCT DETAILS

PRODUCT NAME	STYLE NUMBER	PLY	GAUGE	PRODUCT DESCRIPTION	STITCH	DESIGN	FIT	ACCESSORIES
Forget me not Pullover	F1724	5	3	Ladies funnel neck pullover with long sleeves	Purl knit all over	Tube at cuff and welt	Semi	None
Forget me not Shawl	F1722	3	5	Ladies shawl	Half cardigan knit	Half cardigan stitch all over	None	None
Forget me not Skirt	F1721	5	3	Ladies classic skirt knee length	Purl knit all over	1*1 rib at wrist and tubular bottom	Classic fit	None



## CAMELIA

### LADIES MOCK NECK DRESS

You might be looking at your next go-to winter dress. The bodycon structure and the versatile pattern of ribs all over make Camelia an easy-to-style winter dress, perfect for your days of intense hustling.

#### PRODUCT DETAILS

PRODUCT NAME	STYLE NUMBER	PLY	GAUGE	PRODUCT DESCRIPTION	STITCH	DESIGN	FIT	ACCESSORIES
Camelia	F1028	1	12	Ladies mock neck dress	2*2 ribs knit	Fully fashioned ,2*2 ribs all over	Slim	None

#### SIZE AND WEIGHT

SIZE	6/34	8/36	10/38	12/40	14/42	16/44	18/46	20/48	22/50
Weight* (gm)	320	340	360	380	400	420	440	460	480





## IRIS

### LADIES V NECK DRESS

Winter season shouldn't make you put your accessories away. Hence, Iris, with its V-neck and plain knit, gives you ample space to style it any way you want and make this winter dress truly your own.



#### SIZE AND WEIGHT

SIZE	6/34	8/36	10/38	12/40	14/42	16/44	18/46	20/48	22/50
Weight* (gm)	160	175	190	205	220	240	260	280	300

#### PRODUCT DETAILS

PRODUCT NAME	STYLE NUMBER	PLY	GAUGE	PRODUCT DESCRIPTION	STITCH	DESIGN	FIT	ACCESORIES
Iris	F1046	1	10	Ladies V neck dress	Fully fashioned plain knit all over	Tube at cuff and welt with picot collar	semi slim	None



## FLAMINGO L

### LADIES TURTLENECK DRESS /PONCHO WITH BISHOP SLEEVES

Revel in the comfortable fit and striking style of Flamingo. The snug funnel neck and the boxy fit gives you ample room to smoothly go with as much winter layering as you want, without the hassle of messing up your look.

#### PRODUCT DETAILS

PRODUCT NAME	STYLE NUMBER	PLY	GAUGE	PRODUCT DESCRIPTION	STITCH	DESIGN	FIT	ACCESSORIES
Flamingo L	F1082	2	7	Ladies turtleneck dress/poncho with bishop sleeves	Jacquard knit all over	3 colour way jacquard design at front and back	Relaxed	None

#### SIZE AND WEIGHT

SIZE	FREE
Weight* (gm)	530



## BARBERRY

### LADIES DEEP V NECK DRESS

Bring together the worlds of sensuality and elegance, with the extraordinary appeal of Barberry. The enticing V-neck leads the way to buttons all the way down, breaking your form vertically and hence making you look slimmer and taller.



#### SIZE AND WEIGHT

SIZE	6/34	8/36	10/38	12/40	14/42	16/44	18/46	20/48	22/50
Weight* (gm)	510	530	550	570	600	630	660	690	720

#### PRODUCT DETAILS

PRODUCT NAME	STYLE NUMBER	PLY	GAUGE	PRODUCT DESCRIPTION	STITCH	DESIGN	FIT	ACCESSORIES
Barberry	F1034	2	7	Ladies deep V neck dress	Full cardigan stitch	1*1 at cuff	semi slim	canave shell button



## ANGEL WINGS

### LADIES CREW NECK, PRINCESS LINE PLEATED DRESS WITH POCKETS

Lose yourself in a bit of old-world charm with the whimsical beauty of Angel Wings. The pockets, in front of the smartly crafted side pleats, are especially designed for the modern woman who needs her ladylike outfits to have a functional space.

#### PRODUCT DETAILS

PRODUCT NAME	STYLE NUMBER	PLY	GAUGE	PRODUCT DESCRIPTION	STITCH	DESIGN	FIT	ACCESSORIES
Angel Wings	F1726	1	12	Ladies crew neck, princess line pleated dress with pockets	Fully fashioned plain knit all over.	3/4 length sleeve, with patch pockets and front pleats	Regular	None

#### SIZE AND WEIGHT

SIZE	6/34	8/36	10/38	12/40	14/42	16/44	18/46	20/48	22/50
Weight* (gm)	390	400	410	420	435	440	455	470	485



## QUEEN ANNE'S LACE

LADIES V NECK HOODED DRESS  
WITH TWO POCKETS



### SIZE AND WEIGHT

SIZE	6/34	8/36	10/38	12/40	14/42	16/44	18/46	20/48	22/50
Weight* (gm)	740	770	800	830	860	890	920	950	980

### PRODUCT DETAILS

PRODUCT NAME	STYLE NUMBER	PLY	GAUGE	PRODUCT DESCRIPTION	STITCH	DESIGN	FIT	ACCESORIES
Queen Anne's Lace	F 1730	2	7	Ladies V neck hooded with kangaroo pocket knitted contrast jersey inside hood and wovlen fabric sewn inside body and sleeves.	Cables, reverse and plain knit all over	2x2 Ribs at welts, cuffs and collar.	Slim	None



## TITHONIA

### LADIES ZIP MOCK NECK

Hit the spotlight with maximized style elements of Tithonia. Add some modern grace to your wardrobe with its experimental mock neck, curvy cables design in the front and the uber-chic introduction of the metal zipper.

#### PRODUCT DETAILS

PRODUCT NAME	STYLE NUMBER	PLY	GAUGE	PRODUCT DESCRIPTION	STITCH	DESIGN	FIT	ACCESSORIES
Tithonia	F1732	2	7	Ladies zip mock neck	plain knit with cables	2*2 cuff and welt with twisted cables at front and back	Slim	ykk zipper

#### SIZE AND WEIGHT

SIZE	6/34	8/36	10/38	12/40	14/42	16/44	18/46	20/48	22/50
Weight* (gm)	355	375	395	415	435	455	475	495	515



## ROSE

### LADIES BOAT NECK CABLES DRESS WITH TRUMPET SLEEVES

Witness winter styling becoming tactile with the beautiful chunky pattern of cables on Rose. The form-fitting silhouette and the wide boat neck gives you the much-needed elegance amongst the regular bulky winter outfits.



#### SIZE AND WEIGHT

SIZE	6/34	8/36	10/38	12/40	14/42	16/44	18/46	20/48	22/50
Weight* (gm)	365	385	405	425	450	475	500	525	550

#### PRODUCT DETAILS

PRODUCT NAME	STYLE NUMBER	PLY	GAUGE	PRODUCT DESCRIPTION	STITCH	DESIGN	FIT	ACCESORIES
Rose	F1727	2	7	Ladies boat neck cables dress with trumpet sleeves	Combined with plain and cables knit all over	1*1 rib at cuff and welt	Slim	None









## AZAMI

### LADIES SLEEVELESS PONCHO WITH TURTLENECK

Make a statement as you walk by on a busy street with Azami. The snug turtleneck and the comfortable fit with uniquely styled edges provide ample room to freely wear your personality.

#### PRODUCT DETAILS

PRODUCT NAME	STYLE NUMBER	PLY	GAUGE	PRODUCT DESCRIPTION	STITCH	DESIGN	FIT	ACCESSORIES
Azami	F1056	4	5	Ladies sleeveless poncho with turtleneck	Fully fashioned plain knit all over	2*2 at neck and welt	relaxed	None

#### SIZE AND WEIGHT

SIZE	6/34	8/36	10/38	12/40	14/42	16/44	18/46	20/48	22/50
Weight* (gm)	395	420	445	470	495	520	545	570	595



## AXEL

### LADIES FREE STYLE PONCHO

Sense the breezy experience of a casual stroll with Axel. Its detailed hand-embroidery embellishment at the edges keeps you closer to the roots while giving you ample space to let you spread your wings and fly.



#### SIZE AND WEIGHT

SIZE	6/34	8/36	10/38	12/40	14/42	16/44	18/46	20/48	22/50
Weight* (gm)	250	250	280	280	310	310	340	340	370

#### PRODUCT DETAILS

PRODUCT NAME	STYLE NUMBER	PLY	GAUGE	PRODUCT DESCRIPTION	STITCH	DESIGN	FIT	ACCESORIES
Axel	F1751	1	12	Ladies free style Poncho	Plain knit	Hand embroidery at edge	relaxed	None



## CALATHEAS

### LADIES TURTLENECK PONCHO WITH DOLMAN SLEEVES

Exhibit the charm of a bright Calatheas on a chilly winter morning with this poncho. The turtleneck with its loose long form and cables all over can be styled with trousers or can be used as a coat with boots too.

#### PRODUCT DETAILS

PRODUCT NAME	STYLE NUMBER	PLY	GAUGE	PRODUCT DESCRIPTION	STITCH	DESIGN	FIT	ACCESSORIES
Calatheas	F1701	3	5	Ladies turtleneck poncho with dolman sleeves	Combined with horseshoe cable and plain knit all over	1*1 rib at cuff, neck and curled at bottom edge	Relaxed	None

#### SIZE AND WEIGHT

SIZE	FREE
Weight* (gm)	660



## AVENS

### LADIES PONCHO SHAWL STYLE WITH JACQUARD DESIGN

Revisit the classic evergreen elegance of a poncho with Avens. The mosaic patterned throw-on brings with it a casual appeal, making it an ideal balance of both.



#### SIZE AND WEIGHT

SIZE	FREE
Weight* (gm)	550

#### PRODUCT DETAILS

PRODUCT NAME	STYLE NUMBER	PLY	GAUGE	PRODUCT DESCRIPTION	STITCH	DESIGN	FIT	ACCESSORIES
Avens	F1091	2	7	Ladies poncho shawl style with jacquard design	jacquard knit all over	Tubular finish at bottom and 2 colour way	Relaxed	None



## AYANA

### LADIES PONCHO STYLE WITH DOLMAN SLEEVES

Kick away the wintry chills with the warmth and comfort of Ayana. The fitted sleeves with the uniquely crafted form makes you stand out and feel special.

#### PRODUCT DETAILS

PRODUCT NAME	STYLE NUMBER	PLY	GAUGE	PRODUCT DESCRIPTION	STITCH	DESIGN	FIT	ACCESSORIES
Ayanna	F1708	1	12	Ladies bolero style with dolman sleeves	plain knit all over	1*1 rib at cuff and curl edge finish all round	slim	None

#### SIZE AND WEIGHT

SIZE	6/34	8/36	10/38	12/40	14/42	16/44
Weight* (gm)	290	310	340	370	410	440



## DIVA

### LADIES PONCHO WITH TURTLENECK AND CABLES

Nothing ever goes wrong with the pairing of two timeless classics - cardigans and ponchos- as done in Diva. The boxy fit and the cables on its front emit an authoritative vibe that you can carry elegantly.



#### SIZE AND WEIGHT

SIZE	FREE
Weight* (gm)	580

#### PRODUCT DETAILS

PRODUCT NAME	STYLE NUMBER	PLY	GAUGE	PRODUCT DESCRIPTION	STITCH	DESIGN	FIT	ACCESORIES
Diva	F8808	5	3	Ladies poncho with turtleneck and cables.	combined with half cardigan, twisted cable and aran all over	2*2 rib at semi rounded welt and half cardigan stitch at neck	Relaxed	None



## FLAME TIP

### LADIES SLASH NECK PONCHO WITH BUTTONS

Celebrate the snug winters while you flaunt your style with Flame Tip. This winter layering with the buttons and fancy stitch at the edges brings the appeal that adds an extra edge to your classy personality.

#### PRODUCT DETAILS

PRODUCT NAME	STYLE NUMBER	PLY	GAUGE	PRODUCT DESCRIPTION	STITCH	DESIGN	FIT	ACCESSORIES
Flame Tip	F8893	5	3	Ladies slash neck poncho with buttons	combined with links and jersey knit all over	links stitches at edges	Relaxed	concave shell buttons

#### SIZE AND WEIGHT

SIZE	FREE
Weight* (gm)	585





## MUSCARI

### LADIES TURTLENECK PONCHO WITH POCKETS

Carry the ever-flowing Muscari with utmost ease on a busy winter day. The long length with the pockets and half cardigan stitch is the most casual you can get while strolling through busy streets.



#### SIZE AND WEIGHT

SIZE	FREE
Weight* (gm)	900

#### PRODUCT DETAILS

PRODUCT NAME	STYLE NUMBER	PLY	GAUGE	PRODUCT DESCRIPTION	STITCH	DESIGN	FIT	ACCESSORIES
Muscari	F1715	3	5	Ladies turtleneck poncho with pockets	Half cardigan stitch all over	2*1 rib at both edge and neck with 2 patch pockets	free size	None



## SAGE

### LADIES FREE STYLE PONCHO

Carry the comfort and style of a poncho with a twist and elegance of a dress. Sage could be all that you need to slay that evening party with its off-shoulder neckline and classic plain knit.

#### PRODUCT DETAILS

PRODUCT NAME	STYLE NUMBER	PLY	GAUGE	PRODUCT DESCRIPTION	STITCH	DESIGN	FIT	ACCESSORIES
Sage	F1038	1	12	Ladies free style poncho	Plain knit all over	milano stitch and tubular at bottom	Relaxed	None

#### SIZE AND WEIGHT

SIZE	6/24-8/36	10/38-12/40	14/42-16/44	18/46-20/48
Weight* (gm)	220	245	270	295



## PETREL

### LADIES SHAWL STYLE PONCHO

Petrel is the ideal winter layering that emits sophistication. This throw-on poncho has all it takes to make the flawless first impression, be it at a party or at work.



#### SIZE AND WEIGHT

SIZE	XS
Weight* (gm)	310

#### PRODUCT DETAILS

PRODUCT NAME	STYLE NUMBER	PLY	GAUGE	PRODUCT DESCRIPTION	STITCH	DESIGN	FIT	ACCESORIES
Petrel	F 1712	1	12	Ladies Shawl Style pocho	plain knit all over	milano stitch at both edge and tubular at welt and front	Relaxed	None



## SNOWBERRY

### LADIES SHAWL STYLE PONCHO

Revel in the subtle breeze by the beach with Snowberry. This on-the-go poncho is the ideal layering providing you enough room with its unique form and the extra sprinkle of the appealing casual pattern.

#### PRODUCT DETAILS

PRODUCT NAME	STYLE NUMBER	PLY	GAUGE	PRODUCT DESCRIPTION	STITCH	DESIGN	FIT	ACCESSORIES
Snowberry	F1093	2	7	Ladies shawl style poncho	Rice stitch	1*1 rib with tubular and 2 colour stripes	Relaxed	None

#### SIZE AND WEIGHT

SIZE	FREE
Weight* (gm)	400



## TANSY

### LADIES FREE STYLE PONCHO

Stroll around in the chicest winter outfit you could carry. The fashionable embellishment of the lace all over and such stylish neckline makes Tansy tick all boxes to be your favourite piece of clothing.



#### SIZE AND WEIGHT

SIZE	6/34	8/36	10/38	12/40	14/42	16/44	18/46	20/48	22/50
Weight* (gm)	305	305	335	335	365	365	395	395	425

#### PRODUCT DETAILS

PRODUCT NAME	STYLE NUMBER	PLY	GAUGE	PRODUCT DESCRIPTION	STITCH	DESIGN	FIT	ACCESORIES
Tansy	F1068	3	5	Ladies free style poncho	Lace Leaf stitch all over.	self start at bottom	Relaxed	None



## CARNATION

### LADIES ASSYMETRIC BATWING LONG SLEEVES PONCHO

Redefine the comfort of a poncho by imbuing the style and charm of a poncho. The plain knit and roomy batwing sleeves of Carnation give you the ease-appeal of a poncho, while the body-hugging fit at the hem makes sure that nothing comes in the way of you and a glamorous look.

#### PRODUCT DETAILS

PRODUCT NAME	STYLE NUMBER	PLY	GAUGE	PRODUCT DESCRIPTION	STITCH	DESIGN	FIT	ACCESSORIES
Carnation	F1097	1	12	Ladies assymetric batwing long sleeves Poncho	plain knit all over	1*1 rib with dolman sleeves fashionning at neck	Relaxed	None

#### SIZE AND WEIGHT

SIZE	6/34	8/36	10/38	12/40	14/42	16/44	18/46	20/48	22/50
Weight* (gm)	310	330	350	370	390	410	430	450	470











ASYLUM

LADIES SHAWL

**PRODUCT DETAILS**

PRODUCT NAME	STYLE NUMBER	PLY	GAUGE	PRODUCT DESCRIPTION	STITCH	DESIGN	FIT	ACCESSORIES
Asylum	F1736	1	7	Ladies shawl	loose weaving waffle stitch all over	1*1 rib at bottom and top	None	None

**SIZE AND WEIGHT**

SIZE	FREE
Weight* (gm)	180



**JASMINE**  
LADIES SHAWL



**SIZE AND WEIGHT**

SIZE	FREE
Weight* (gm)	170

**PRODUCT DETAILS**

PRODUCT NAME	STYLE NUMBER	PLY	GAUGE	PRODUCT DESCRIPTION	STITCH	DESIGN	FIT	ACCESSORIES
Jasmine	F1042	1	7	Ladies shawl	Plain knit all over with loose weaving all over	1*1 rib at bottom and top	None	None



LILIUM  
LADIES SHAWL

**PRODUCT DETAILS**

PRODUCT NAME	STYLE NUMBER	PLY	GAUGE	PRODUCT DESCRIPTION	STITCH	DESIGN	FIT	ACCESSORIES
Lilium	F1738	1	7	Ladies shawl	loose weaving lace Leaf stitch	1*1 rib at bottom and top	None	None

**SIZE AND WEIGHT**

SIZE	FREE
Weight* (gm)	180



**BORONIA**  
LADIES SHAWL



**SIZE AND WEIGHT**

SIZE	FREE
Weight* (gm)	<b>180</b>

**PRODUCT DETAILS**

PRODUCT NAME	STYLE NUMBER	PLY	GAUGE	PRODUCT DESCRIPTION	STITCH	DESIGN	FIT	ACCESSORIES
Boronia	F1737	1	7	Ladies shawl	loose weaving with eyelet columns	1*1 rib at bottom and top	None	None







## BEE BALM

### MEN V NECK PULLOVER

Bring a classic charm to your wardrobe with Bee Balm. With the timeless Argyle pattern in the front, Bee Balm gives you the effortless dapper look of the good old days.

#### PRODUCT DETAILS

PRODUCT NAME	STYLE NUMBER	PLY	GAUGE	PRODUCT DESCRIPTION	STITCH	DESIGN	FIT	ACCESSORIES
Bee blam	M 2030	1	12	Men v neck pullover	Fully fashioned, plain stitch all over	1*1 rib at cuff, welt and Argyle intarsia at front.	Slim	None

#### SIZE AND WEIGHT

SIZE	XS	S	M	L	XL	2XL	3XL	4XL	5XL
Weight* (gm)	220	230	245	260	275	295	315	335	355





## CAMIONNEUR

### MEN CAMIONNEUR COLLAR PULLOVER WITH 1/2 ZIP

Sport the relaxed appeal with Camionneur's classic collar. The half zip adds a tinge of excitement and freshness on the otherwise subtle pullover giving you a more positive appearance.

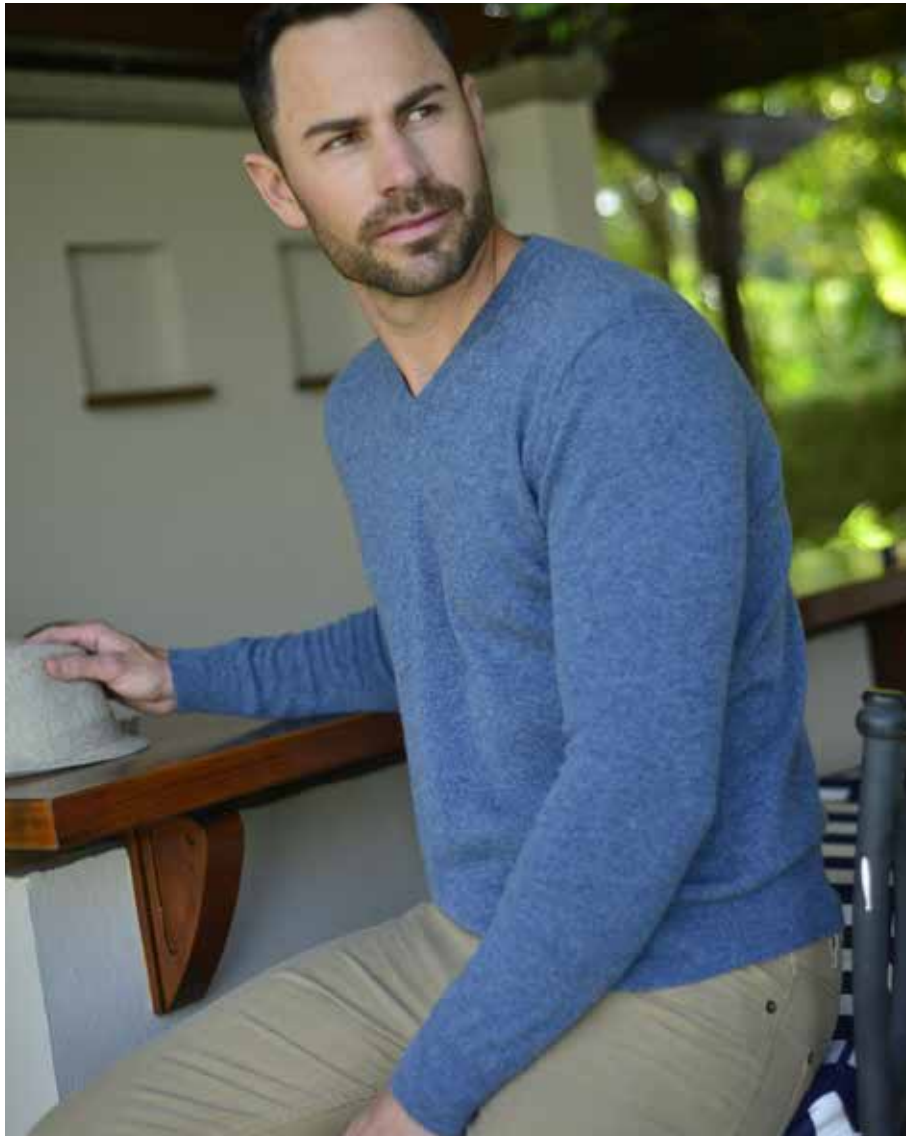


#### SIZE AND WEIGHT

SIZE	XS	S	M	L	XL	2XL	3XL	4XL	5XL
Weight* (gm)	255	265	280	295	320	340	360	380	400

#### PRODUCT DETAILS

PRODUCT NAME	STYLE NUMBER	PLY	GAUGE	PRODUCT DESCRIPTION	STITCH	DESIGN	FIT	ACCESSORIES
Camionneur	M 2022	1	12	Men camionneur collar pullover with 1/2 zip	Fully fashioned Plain stitch all over	1*1 cuff and welt	semi slim	ykk zipper



## BOTTLE BRUSH

### MEN V NECK PULLOVER WITH INTARSIA DESIGN AT BACK

Sprint through the winter chills with the simplistic elegance of Bottle Brush. Its plain knit, with a twist of jacquard design at the back, is the perfect expression of the surprise elements of your personality.

#### PRODUCT DETAILS

PRODUCT NAME	STYLE NUMBER	PLY	GAUGE	PRODUCT DESCRIPTION	STITCH	DESIGN	FIT	ACCESSORIES
Bottle brush	M 2032	1	12	Men v neck pullover with intarsia design at back	Fully fashioned plain knit all over	1*1 rib at cuff and welt with tipping inside collar	semi slim	None

#### SIZE AND WEIGHT

SIZE	XS	S	M	L	XL	2XL	3XL	4XL	5XL
Weight* (gm)	220	230	245	260	275	295	315	335	355



## CRANESDIL

### MEN CREW NECK PULLOVER WITH TIPPING

Stroll around with the new-found charisma that comes with Cranesdil. The round neck with tipping highlights your physique and overall enhances your handsome appeal.



#### SIZE AND WEIGHT

SIZE	XS	S	M	L	XL	2XL	3XL	4XL	5XL
Weight* (gm)	305	325	340	365	395	425	455	485	515

#### PRODUCT DETAILS

PRODUCT NAME	STYLE NUMBER	PLY	GAUGE	PRODUCT DESCRIPTION	STITCH	DESIGN	FIT	ACCESSORIES
Cranesdil	M 1732	2	7	Men crew neck pullover with tipping	Fully fashioned plain knit all over	1*1 rib and tipping at cuff, welt and collar	Semi slim	None



## CROWN IMPERIAL

### MEN V NECK PULLOVER WITH TIPPING

Turn your peppy side on with the fresh vibes of Crown Imperial. The tipping at its cuffs, welts and collars give you the much-needed pop of colour in the dull days of winter, while the plain knit provides the classic cashmere warmth and softness

#### PRODUCT DETAILS

PRODUCT NAME	STYLE NUMBER	PLY	GAUGE	PRODUCT DESCRIPTION	STITCH	DESIGN	FIT	ACCESSORIES
Crown imperial	M 1728	2	7	Men V neck pullover with tipping	Fully fashioned plain knit all over	1*1 rib and tipping at cuff, welt and collar	Semi slim	None

#### SIZE AND WEIGHT

SIZE	XS	S	M	L	XL	2XL	3XL	4XL	5XL
Weight* (gm)	305	325	345	365	395	425	455	485	515



## KINGSPEAR

### MEN V NECK PULLOVER WITH STRIPES

Celebrate the comfort of Kingspear at every informal appearance. This striped V-neck is your easy-going winter essential to sport off a laid-back attitude.



#### SIZE AND WEIGHT

SIZE	XS	S	M	L	XL	2XL	3XL	4XL	5XL
Weight* (gm)	220	230	245	260	275	295	315	335	355

#### PRODUCT DETAILS

PRODUCT NAME	STYLE NUMBER	PLY	GAUGE	PRODUCT DESCRIPTION	STITCH	DESIGN	FIT	ACCESORIES
Kingspear	M2012	1	12	Men V neck pullover with stripes	Fully fashioned plain knit all over	1*1 rib at cuff, welt and collar	semi slim	None



## EDWIN

### MEN MOCK NECK PULLOVER WITH BUTTONS

Redefine the comfort of a pullover by introducing the elegance of a shirt. With its stylish mock neck and the gripping pattern of edgy ribs on welts, cuffs and shoulders, Edwin adds the charm to your comfort.

#### PRODUCT DETAILS

PRODUCT NAME	STYLE NUMBER	PLY	GAUGE	PRODUCT DESCRIPTION	STITCH	DESIGN	FIT	ACCESORIES
Edwin	M 1729	2	7	Men Mock neck pullover with buttons.	combined with plain knit, racking and ribs.	2*1 rib at cuff, welt and collar with four buttons and padded shoulder	semi slim	Engrave buttons

#### SIZE AND WEIGHT

SIZE	XS	S	M	L	XL	2XL	3XL	4XL	5XL
Weight* (gm)	370	390	405	420	440	460	480	500	520



## GREK

### MEN SMOCK NECK PULLOVER WITH ZIPPER

Bring out the hunk in you with Grek's smoke neck. Along with the zip, the rib pattern on the cuffs and the moss knit detailing makes this cashmere a must-have this winter.



#### SIZE AND WEIGHT

SIZE	XS	S	M	L	XL	2XL	3XL	4XL	5XL
Weight* (gm)	530	570	610	650	690	730	770	810	850

#### PRODUCT DETAILS

PRODUCT NAME	STYLE NUMBER	PLY	GAUGE	PRODUCT DESCRIPTION	STITCH	DESIGN	FIT	ACCESSORIES
Grek	M 1742	4	5	Men smock neck pullover with zipper	Rice stitch all over	2*1 at cuff, welt and collar and with zipper at right side	Slim	ykk zipper



## HOLLY

### MEN CAMIONNEUR COLLAR PULLOVER WITH 1/2 ZIP

Bring some effortless style with the experimental camionneur collar of Holly. The fully fashioned plain knit and the inner contrasting colour gives you an edgy look by highlighting your jawline and surrounds your neck with warmth at the same time.

#### PRODUCT DETAILS

PRODUCT NAME	STYLE NUMBER	PLY	GAUGE	PRODUCT DESCRIPTION	STITCH	DESIGN	FIT	ACCESSORIES
Holly	M 2016	2	7	Men camionneur collar pullover with 1/2 zip	Fully fashioned plain stitch	1*1 rib at cuff and welt with contrast colour inside neck	Slim	ykk zipper

#### SIZE AND WEIGHT

SIZE	XS	S	M	L	XL	2XL	3XL	4XL	5XL
Weight* (gm)	350	370	390	410	430	450	470	490	510





## HONESTY

### MEN MOCK NECK PULLOVER WITH ZIPPER

Honesty brings some effortless edge with its mock neck. The rib pattern on the sleeves and the easy-going fit are specially made for you and your unique personality.



#### SIZE AND WEIGHT

SIZE	XS	S	M	L	XL	2XL	3XL	4XL	5XL
Weight* (gm)	455	475	495	515	540	565	590	615	640

#### PRODUCT DETAILS

PRODUCT NAME	STYLE NUMBER	PLY	GAUGE	PRODUCT DESCRIPTION	STITCH	DESIGN	FIT	ACCESORIES
Honesty	M 2011	3	5	Men mock neck pullover with zipper	combined with plain stitch and 6x1 ribs	1*1 at cuff,welt and collar with inner contrast colour with 6*1 rib at sleeves	Semi Slim	Ykk zipper



## LONDON PRIDE

### MEN HIGH-BLAS ROLL NECK

Exhibit the look of modern elegance with the luxurious and simplistic charm of London Pride. The fully fashioned plain knit, combined with a versatile, roll-down turtleneck gives you the perfect base for your winter coats and jackets.

#### PRODUCT DETAILS

PRODUCT NAME	STYLE NUMBER	PLY	GAUGE	PRODUCT DESCRIPTION	STITCH	DESIGN	FIT	ACCESSORIES
London Pride	M 2013	1	12	Men high-blas roll neck	Fully fashioned plain knit all over	1*1 rib at cuff,welt and collar	semi slim	None

#### SIZE AND WEIGHT

SIZE	XS	S	M	L	XL	2XL	3XL	4XL	5XL
Weight* (gm)	230	245	260	275	290	305	320	335	350



## LUCKY BRAND

### MEN MOCK NECK PULLOVER

Subtlety never goes wrong in case of Lucky Brand. This plain casual layering with mock neck is the kind of timeless classic that you would like to add to your collection.



#### SIZE AND WEIGHT

SIZE	XS	S	M	L	XL	2XL	3XL	4XL	5XL
Weight* (gm)	230	245	260	275	290	305	320	335	350

#### PRODUCT DETAILS

PRODUCT NAME	STYLE NUMBER	PLY	GAUGE	PRODUCT DESCRIPTION	STITCH	DESIGN	FIT	ACCESORIES
Lucky brand	M1731	1	12	Men mock neck pullover	Fully fashioned plain knit all over	1*1 rib at cuff, welt and collar	semi slim	None



## MIDAS

### MEN V NECK PULLOVER

With its elegant V-neck and dynamic simplicity, Midas becomes the winter wardrobe essential. The well-fitting finish and a light touch of rib pattern on the cuffs of Midas, adds a certain confidence to your stride.

#### PRODUCT DETAILS

PRODUCT NAME	STYLE NUMBER	PLY	GAUGE	PRODUCT DESCRIPTION	STITCH	DESIGN	FIT	ACCESSORIES
Midas	M 1741	1	12	Men V neck pullover	Fully fashioned plain knit all over	1*1 rib at cuff, welt and collar	Semi slim	None

#### SIZE AND WEIGHT

SIZE	XS	S	M	L	XL	2XL	3XL	4XL	5XL
Weight* (gm)	220	230	245	260	275	295	315	335	355



## MULLBERRY

### MEN CREW NECK WITH CURLED EDGE AND RAGLAN SLEEVES

Mull over all the important decisions at work with Mullberry. This crew neck pullover with cable knit in the front and plain knit on the sleeves brings you a stylish ruggedness that makes you stand out.

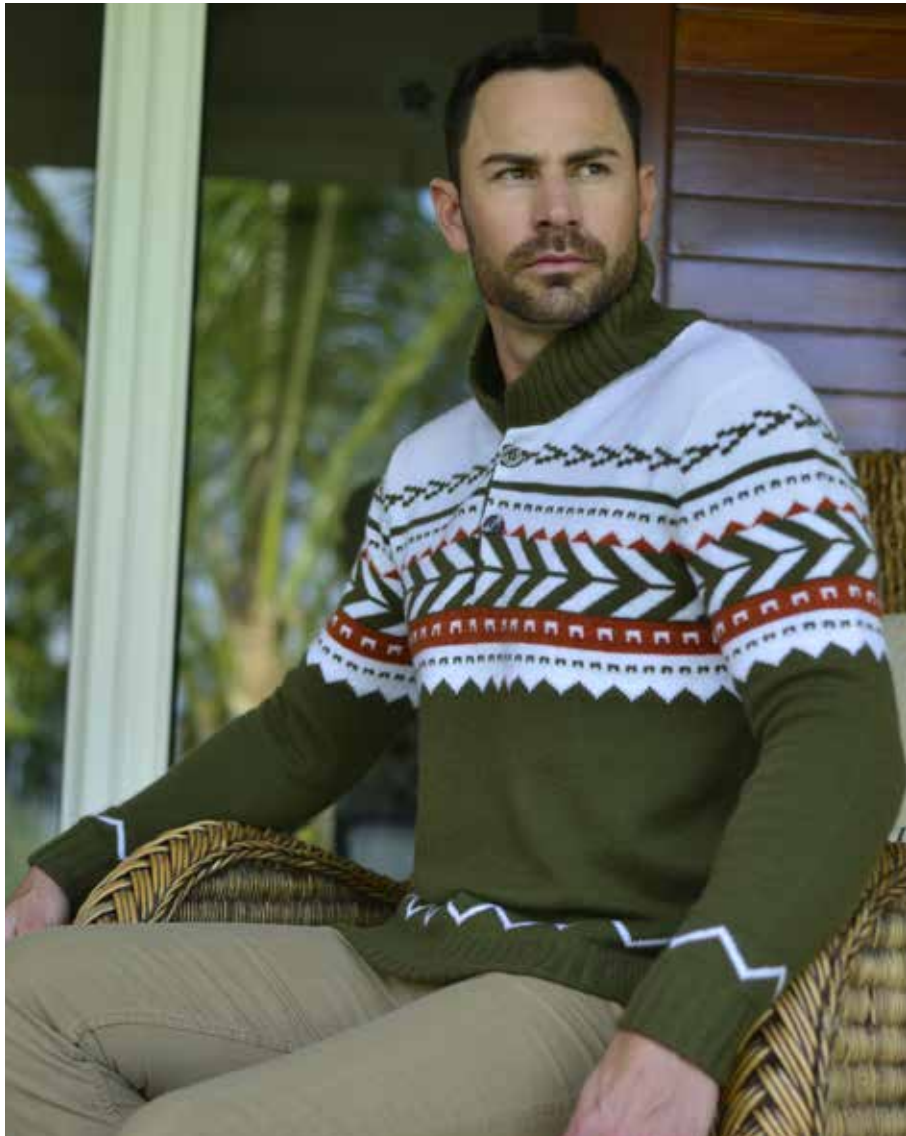


#### SIZE AND WEIGHT

SIZE	XS	S	M	L	XL	2XL	3XL	4XL	5XL
Weight* (gm)	305	330	355	380	405	430	455	480	505

#### PRODUCT DETAILS

PRODUCT NAME	STYLE NUMBER	PLY	GAUGE	PRODUCT DESCRIPTION	STITCH	DESIGN	FIT	ACCESORIES
Mullberry	M 2008	2	7	Men crew neck with curled edge and raglan sleeves	Combined with plain stitch and cables	1*1 rib at cuff, welt and tubular at collar, with cables at front.	Semi Slim	None



## NED

### MEN TUNISIAN COLLAR WITH JACQUARD PATTERN AND TWO BUTTONS

Ned offers the vibrancy of a bright summer afternoon in the middle of chilly winters. The three colour jacquard all over, combined with a stylish and unique Tunisian collar, add up to become a statement winter attire.

#### PRODUCT DETAILS

PRODUCT NAME	STYLE NUMBER	PLY	GAUGE	PRODUCT DESCRIPTION	STITCH	DESIGN	FIT	ACCESSORIES
Ned	M 1724	2	7	Men tunisian collar with jacquard pattern and two buttons	Plain knit all over	3*3 doubled cuff and welt and 3 colour way design	semi Slim	Engraved buttons

#### SIZE AND WEIGHT

SIZE	XS	S	M	L	XL	2XL	3XL	4XL	5XL
Weight* (gm)	420	440	460	480	510	540	570	600	630



## WAGNER

### MEN V NECK PULLOVER

With Wagner's grounded yet gutsy look, carry yourself with pride. The easy-going V neck pullover in its raw evergreen form is just the kind of layering you're looking for.



#### SIZE AND WEIGHT

SIZE	XS	S	M	L	XL	2XL	3XL	4XL	5XL
Weight* (gm)	220	230	245	260	275	295	315	335	355

#### PRODUCT DETAILS

PRODUCT NAME	STYLE NUMBER	PLY	GAUGE	PRODUCT DESCRIPTION	STITCH	DESIGN	FIT	ACCESSORIES
Wagner	M 1727	1	12	Men V neck pullover	Fully fashioned plain knit all over.	1*1 rib at cuff, welt with tubular collar	semi slim	None



## ROMEL

### MEN HIGH ROLL NECK WITH LACE AND TWISTED PULLOVER WITH 6 BUTTONS PLACKET

Romel has been crafted with a three colour marl, giving it a visual texture, and cables in the front to give a tactile texture. Romel breaks all boundaries of a simple winter pullover with a dynamic roll neck and stylish packet of buttons near the collar.

#### PRODUCT DETAILS

PRODUCT NAME	STYLE NUMBER	PLY	GAUGE	PRODUCT DESCRIPTION	STITCH	DESIGN	FIT	ACCESSORIES
Romel	M 1713	6	3	Men high roll neck with lace and twisted pullover with 6 buttons placket	Combined with plain knit and cables	3*2 rib at cuff, welt and rolled edge neck with tubular	Slim	Speedy buttons

#### SIZE AND WEIGHT

SIZE	XS	S	M	L	XL	2XL	3XL	4XL	5XL
Weight* (gm)	605	625	650	675	700	725	750	775	800





## SNAP DRAGON

### MEN CREW NECK PULLOVER WITH BLOCK STRIPES

Toss away all the sorrows with the vibrant aura of Snap Dragon. Stripes never go out of style and along with the crew neck, they are always successful in making you feel comfortably confident.



#### SIZE AND WEIGHT

SIZE	XS	S	M	L	XL	2XL	3XL	4XL	5XL
Weight* (gm)	220	230	245	260	275	295	315	335	355

#### PRODUCT DETAILS

PRODUCT NAME	STYLE NUMBER	PLY	GAUGE	PRODUCT DESCRIPTION	STITCH	DESIGN	FIT	ACCESSORIES
Snap Dragon	M 2009	1	12	Men Crew neck pullover with Block Stripes	Fully fashion plain knit	1*1 cuff, welt and collar all over.	Semi slim	None



## SPEED WELL

### MEN TUNISIAN COLLAR PULLOVER

Enhance your individual charm with the unique design on Speed Well. The stylish Tunisian collar enhances the simplicity of the plain knit on the back. The cables at the front and the sleeves bring out your unique style with simplicity.

#### PRODUCT DETAILS

PRODUCT NAME	STYLE NUMBER	PLY	GAUGE	PRODUCT DESCRIPTION	STITCH	DESIGN	FIT	ACCESSORIES
Speed Well	M 2007	2	7	Men tunisian collar pullover	Combined with plain, 9 by 9 cables	2*1 rib at cuff, welt, collar and placket with cables at front and sleeves	Semi slim	none

#### SIZE AND WEIGHT

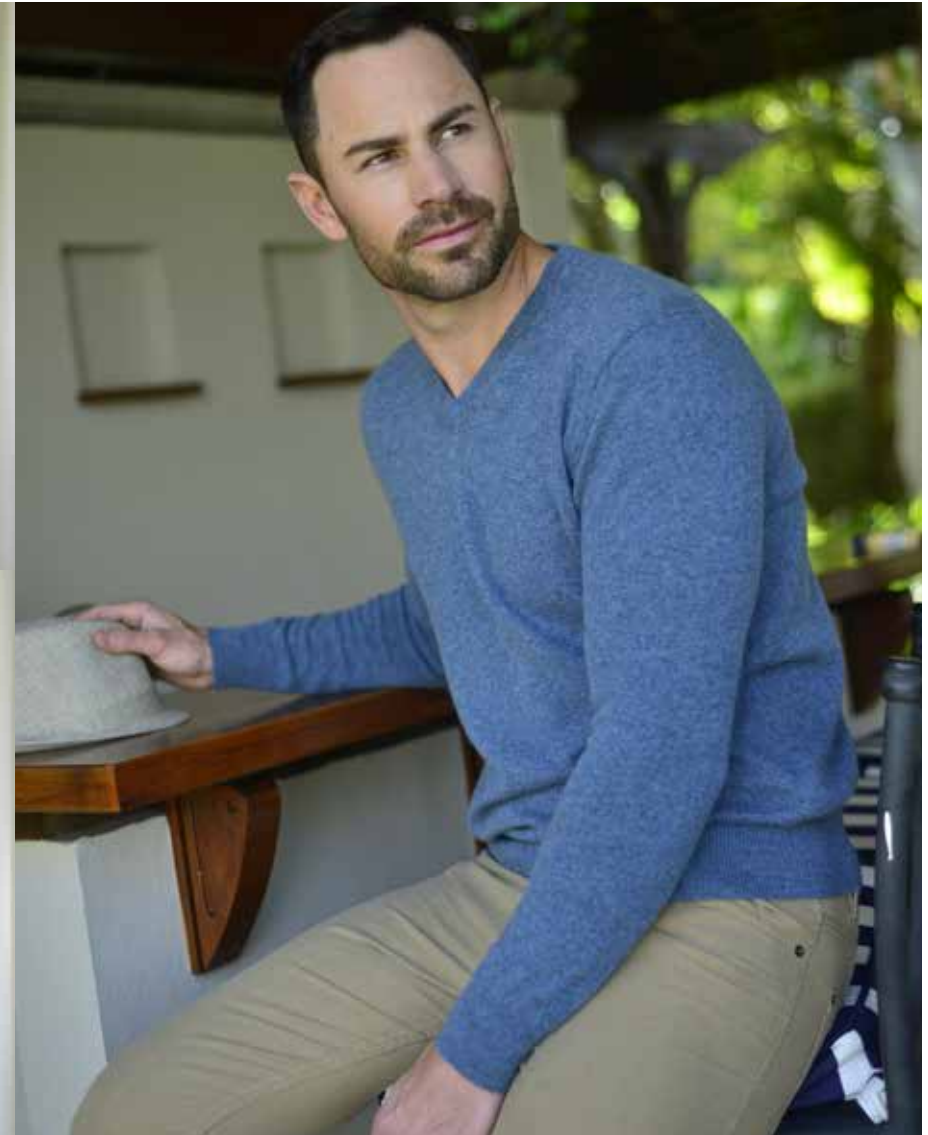
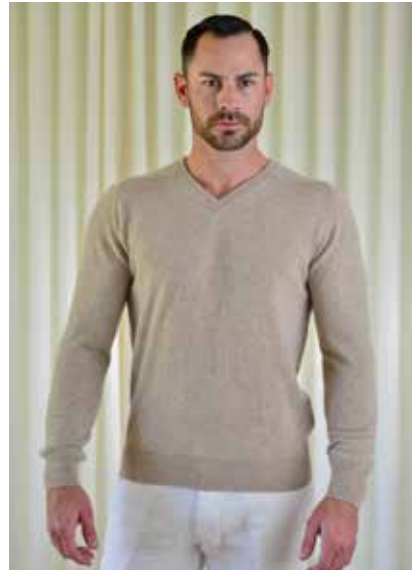
SIZE	XS	S	M	L	XL	2XL	3XL	4XL	5XL
Weight* (gm)	330	350	370	390	410	430	450	470	490



## TELSTAR

### MEN V NECK SADDLE SHOULDER WITH INNER TIPPING AT COLLAR

Highlight your charismatic personality with Telstar's unique fit. The V neck with the inner contrast collar makes you look confident and bold, making this your favourite winter layering.



#### SIZE AND WEIGHT

SIZE	XS	S	M	L	XL	2XL	3XL	4XL	5XL
Weight* (gm)	220	230	245	260	275	295	315	335	355

#### PRODUCT DETAILS

PRODUCT NAME	STYLE NUMBER	PLY	GAUGE	PRODUCT DESCRIPTION	STITCH	DESIGN	FIT	ACCESSORIES
Telstar	M 2014	1	12	Men V neck saddle shoulder with inner tipping at collar.	Fully fashioned plain knit all over	1*1 cuff, welt and collar	Semi slim	None



## THISTLE

### MEN V NECK SADDLE SHOULDER WITH CABLES

Thistle brings together an elegant and bold V-neck, design of cables all over and edgy finish of ribs at neckline, cuffs and hemline. With the combination of three bold and edgy elements put together in one sweater, you are sure to stand out from the crowd.

#### PRODUCT DETAILS

PRODUCT NAME	STYLE NUMBER	PLY	GAUGE	PRODUCT DESCRIPTION	STITCH	DESIGN	FIT	ACCESSORIES
Thistle	M 2023	3	5	Men V neck saddle shoulder with cables	Cables all over	2*1 rib at cuff, welt with tubular collar and 6 stitch cable braid	semi slim	None

#### SIZE AND WEIGHT

SIZE	XS	S	M	L	XL	2XL	3XL	4XL	5XL
Weight* (gm)	360	375	390	405	420	435	450	465	480



## ULRIC

### MEN CREW NECK WITH JACQUARD DESIGN PULLOVER

Wander away with your thoughts on a relaxed evening with Ulric. The round neck and the symmetric jacquard all over is the spice in your usual simple subtle wardrobe.



#### SIZE AND WEIGHT

SIZE	XS	S	M	L	XL	2XL	3XL	4XL	5XL
Weight* (gm)	350	370	390	410	430	450	470	490	510

#### PRODUCT DETAILS

PRODUCT NAME	STYLE NUMBER	PLY	GAUGE	PRODUCT DESCRIPTION	STITCH	DESIGN	FIT	ACCESSORIES
Ulric	M 1722	2	7	Men crew neck with jacquard design pullover	Fully fashioned plain knit all over	1*1 cuff, welt and collar	Semi slim	None



## KLINKER

### MEN CREW NECK WITH JACQUARD DESIGN PULLOVER

Klinker brings with it the excitement and vibrancy of holiday spirits. Its two-colour jacquard all over combined with the reindeer design in festive colours prepares you for family time in the holidays in the best way possible.

#### PRODUCT DETAILS

PRODUCT NAME	STYLE NUMBER	PLY	GAUGE	PRODUCT DESCRIPTION	STITCH	DESIGN	FIT	ACCESSORIES
Klinker	M 1721	2	7	Men crew neck with jacquard design pullover	Fully fashioned plain knit all over	1*1 rib at cuff, welt and collar with rein deer design	semi slim	None

#### SIZE AND WEIGHT

SIZE	XS	S	M	L	XL	2XL	3XL	4XL	5XL
Weight* (gm)	420	435	450	465	480	495	510	525	540



## KLENDELL

### MEN POLO NECK PULLOVER WITH BUTTONS

Clear away your confusion for work-wear with Klendell. This pullover is the ideal balance between formal look with its plain knit and the casual appeal with the open placket, making it exactly what you need for your day at work.



#### SIZE AND WEIGHT

SIZE	XS	S	M	L	XL	2XL	3XL	4XL	5XL
Weight* (gm)	485	505	525	550	575	600	625	650	675

#### PRODUCT DETAILS

PRODUCT NAME	STYLE NUMBER	PLY	GAUGE	PRODUCT DESCRIPTION	STITCH	DESIGN	FIT	ACCESSORIES
Klendell	M 1725	3	5	Men polo neck pullover with buttons	Fully fashioned plain knit all over	3*2 rib at cuff, welt and 2*1 collar and placket	semi slim	Buttons



## ROYAL PALM

### MEN 1/2 ZIP CAMIONNEUR COLLAR WITH INNER CONTRAST

Bring some effortless style with the experimental camionneur collar of Royal Palm. The fully fashioned plain knit and the inner contrast colour gives you an edgy look by highlighting your jawline and surrounds your neck with warmth at the same time.

#### PRODUCT DETAILS

PRODUCT NAME	STYLE NUMBER	PLY	GAUGE	PRODUCT DESCRIPTION	STITCH	DESIGN	FIT	ACCESSORIES
Royal plam	M2021	1	12	Men 1/2 zip camionneur collar with inner contrast	Fullt fashioned plain knit	1*1 rib at cuff and welt	semi slim	ykk zipper

#### SIZE AND WEIGHT

SIZE	XS	S	M	L	XL	2XL	3XL	4XL	5XL
Weight* (gm)	250	265	280	300	320	340	360	380	400











## BORIS

### MEN SHAWL NECK CARDIGAN WITH CABLES AND BUTTONS

Boris brings the royal opulent charm to your winter collection with its diamond-shaped pattern. The raised cables entwined with aran design all over give you a comfortable vibe, while the shawl neck brings the element of effortless style.

#### PRODUCT DETAILS

PRODUCT NAME	STYLE NUMBER	PLY	GAUGE	PRODUCT DESCRIPTION	STITCH	DESIGN	FIT	ACCESSORIES
Boris	M 1716	5	3	Men shawl neck cardigan with cables and buttons	Combined with Aran and 6*6 cables all over	2*1 rib at cuff, welt and collar	Slim	Smoke buttons

#### SIZE AND WEIGHT

SIZE	XS	S	M	L	XL	2XL	3XL	4XL	5XL
Weight* (gm)	600	620	640	670	700	730	760	790	820



## DUSTIN

### MEN SHAWL NECK AND JACQUARD DESIGN

Dustin makes sure that winters don't faze you and your vibrant stance. With the shawl neck that exhibits a classic look and the casual five-coloured jacquard pattern, this is your time to shine.



#### SIZE AND WEIGHT

SIZE	XS	S	M	L	XL	2XL	3XL	4XL	5XL
Weight* (gm)	470	485	500	515	540	565	590	615	640

#### PRODUCT DETAILS

PRODUCT NAME	STYLE NUMBER	PLY	GAUGE	PRODUCT DESCRIPTION	STITCH	DESIGN	FIT	ACCESSORIES
Dustin	M 1714	2	7	Men shawl neck and jacquard design	Combined with ladder and plain knits all over	1*1 rib at cuff, welt and 2*1 at collar with 5 colour way	Semi slim	Engraved buttons



## ABONIS

### MEN MOCK NECK FULL ZIP CARDIGAN WITH RAGLAN SLEEVES AND CONTRAST AT NECK

Make your winters effortlessly stylish with the versatility of Abonis. Fashioned with bold ribs pattern all over, Abonis keeps you warm with a mock neck, which becomes a collar with a little flick of the zipper.

#### PRODUCT DETAILS

PRODUCT NAME	STYLE NUMBER	PLY	GAUGE	PRODUCT DESCRIPTION	STITCH	DESIGN	FIT	ACCESSORIES
Abonis	M 2024	3	5	Men mock neck full zip cardigan with raglan sleeves and contrast at neck	Ribbed all over	fully Fashioned 2*2 ribs all over	Semi slim	Ykk zipper

#### SIZE AND WEIGHT

SIZE	XS	S	M	L	XL	2XL	3XL	4XL	5XL
Weight* (gm)	490	520	550	580	610	640	670	700	730



## BISHOP

### MEN FULL ZIP CARDIGAN WITH CABLES AND CONTRAST INNER COLLAR

Opt for one smart addition to your wardrobe by going for Bishop. The zip with the contrasting colour of the collar gives a charming feel and the cables all over add to it.



#### SIZE AND WEIGHT

SIZE	XS	S	M	L	XL	2XL	3XL	4XL	5XL
Weight* (gm)	380	400	420	425	475	500	530	560	590

#### PRODUCT DETAILS

PRODUCT NAME	STYLE NUMBER	PLY	GAUGE	PRODUCT DESCRIPTION	STITCH	DESIGN	FIT	ACCESSORIES
Bishop	M 1730	2	7	Men full zip cardigan with cables and contrast inner collar	6 stitches cable all over	1*1 rib at cuff, welt and collar	Semi slim	Ykk zipper



## WALKER [TOP]

### MEN FULL ZIP AND HOODED CARDIGAN WITH KANGAROO POCKETS

Give in to your winter hibernation mood with the ease and comfort of Walker. Although designed for laid-back days with its hooded neck and kangaroo pockets, Walker is equally perfect as a semi-casual outfit for your workplace.

#### PRODUCT DETAILS

PRODUCT NAME	STYLE NUMBER	PLY	GAUGE	PRODUCT DESCRIPTION	STITCH	DESIGN	FIT	ACCESSORIES
Walker	M 1736	1	12	Men full zip and hooded cardigan with kangaroo pockets	Fully fashioned plain knit all over	1*1 rib at cuff and welt	Semi slim	Ykk zipper

#### SIZE AND WEIGHT

SIZE	XS	S	M	L	XL	2XL	3XL	4XL	5XL
Weight* (gm)	320	335	350	365	380	395	410	425	440





## MAPLE

### MEN V NECK CARDIGAN WITH BUTTONS AND PATCH POCKETS

Boost your style statement with the uniquely knitted Maple. The casual V neck with two insert pockets for added convenience make this the winter layering that you would learn to love.



#### SIZE AND WEIGHT

SIZE	XS	S	M	L	XL	2XL	3XL	4XL	5XL
Weight* (gm)	230	250	270	290	310	330	350	370	390

#### PRODUCT DETAILS

PRODUCT NAME	STYLE NUMBER	PLY	GAUGE	PRODUCT DESCRIPTION	STITCH	DESIGN	FIT	ACCESSORIES
Maple	M 2025	1	12	Men V neck cardigan with buttons and patch pockets	Fully fashioned plain knit all over	1*1 rib at cuff, welt and collar tipping along placket	Semi slim	Buttons on placket and on pockets



## LEX

### MEN DEEP V NECK CARDIGAN, SLIGHTLY CURVED SHAPE WITH BUTTONS AND JACQUARD PATTERNS

Bring out your edgy side with the bright and bold geometric jacquard of Lex. The curvy V-neck balances the sharp pattern, while the ribs surround your neck with a natural and effortless ease.

#### PRODUCT DETAILS

PRODUCT NAME	STYLE NUMBER	PLY	GAUGE	PRODUCT DESCRIPTION	STITCH	DESIGN	FIT	ACCESSORIES
Lex	M 1720	3	5	Men deep V neck cardigan, slightly curved shape with buttons and jacquard patterns.	Combined with net and bird eyes knits all over	2*1 cuff, welt and placket with 2 color way and and six buttons	Semi slim	Assorted buttons

#### SIZE AND WEIGHT

SIZE	XS	S	M	L	XL	2XL	3XL	4XL	5XL
Weight* (gm)	510	530	550	575	600	625	650	675	700



## KLAUS

### MEN V NECK CARDIGAN WITH BUTTONS AND CABLES ALL OVER

Casual with an adventurous touch is what describes Klaus the best. The stylish V-neck with cables all over makes this the winter essential that you can carry all-day long comfortably.

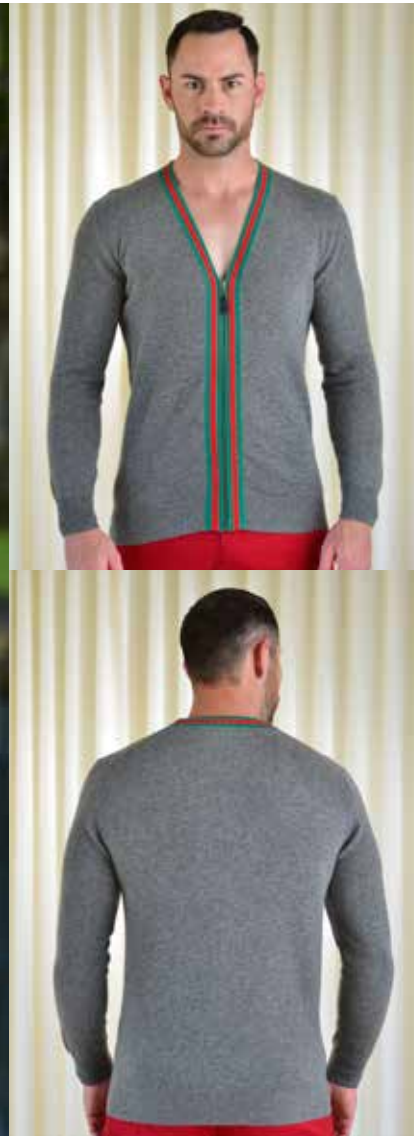


#### SIZE AND WEIGHT

SIZE	XS	S	M	L	XL	2XL	3XL	4XL	5XL
Weight* (gm)	440	460	480	500	530	560	590	620	650

#### PRODUCT DETAILS

PRODUCT NAME	STYLE NUMBER	PLY	GAUGE	PRODUCT DESCRIPTION	STITCH	DESIGN	FIT	ACCESORIES
Klaus	M 1718	3	5	Men V neck cardigan with buttons and cables all over	8 stitch cables all over	2*1 cuff, welt and tubular placket with buttons	Semi slim	Assorted buttons



## MISTLETOE

### MEN FULLZIP V NECK CARDIGAN WITH TWO COLOUR CONTRAST TIPPINGS AT PLACKET

Exhibit the joy of Christmas in the most minimal way with the smartly coloured front tape of Mistletoe. The full zip and a sharp V-neck make Mistletoe nothing short of a stylish winter jacket crafted with the softness of cashmere.

#### PRODUCT DETAILS

PRODUCT NAME	STYLE NUMBER	PLY	GAUGE	PRODUCT DESCRIPTION	STITCH	DESIGN	FIT	ACCESSORIES
Mistletoe	M 2017	1	12	Men full zip V neck cardigan with two colour contrast tippings at placket	Fully fashioned plain knit all over	1*1 cuff, welt and two colour way tubular placket	Slim	Ykk zipper

#### SIZE AND WEIGHT

SIZE	XS	S	M	L	XL	2XL	3XL	4XL	5XL
Weight* (gm)	270	285	300	315	330	345	360	375	390



## OSKAR

### MEN DEEP V NECK CARDIGAN, SLIGHTLY CURVED SHAPE WITH BUTTONS

Give your personality a robust edge with Oskar. This deep V-neck cardigan, surrounded by ribs at the neck makes you look and feel compassionate yet authoritative.



#### SIZE AND WEIGHT

SIZE	XS	S	M	L	XL	2XL	3XL	4XL	5XL
Weight* (gm)	640	660	680	700	720	740	760	780	800

#### PRODUCT DETAILS

PRODUCT NAME	STYLE NUMBER	PLY	GAUGE	PRODUCT DESCRIPTION	STITCH	DESIGN	FIT	ACCESSORIES
Oskar	M 1723	5	3	Men deep V neck cardigan, slightly curved shape with buttons	Fully fashioned plain knit all over	2*1 cuff with doubled welt and placket	Semi slim	Assorted buttons



## SAPONARIA

### MEN V NECK CARDIGAN WITH BUTTONS

Enhance the bold and edgy side of your personality with Saponaria. The V-neck with the fashionable knit is what gives you a classy look.

#### PRODUCT DETAILS

PRODUCT NAME	STYLE NUMBER	PLY	GAUGE	PRODUCT DESCRIPTION	STITCH	DESIGN	FIT	ACCESSORIES
Saponaria	M 2003	1	12	Men V neck cardigan with buttons.	Fully fashioned plain knit all over	1*1 cuff, welt and placket	Semi slim	Engraved buttons

#### SIZE AND WEIGHT

SIZE	XS	S	M	L	XL	2XL	3XL	4XL	5XL
Weight* (gm)	235	250	265	280	300	320	340	360	380



## IGOR

### MEN SHAWL NECK WITH JACQUARD PATTERN AND BUTTONS

Rejoice in the high-spirited charm of Igor – it is something you can count on for those slow winter days. With vibrant shapes of geometric jacquard, Igor adds a bold character to your winter wardrobe and balances it with a hint of grace at the soft shawl collar.



#### SIZE AND WEIGHT

SIZE	XS	S	M	L	XL	2XL	3XL	4XL	5XL
Weight* (gm)	520	540	560	580	600	625	650	675	700

#### PRODUCT DETAILS

PRODUCT NAME	STYLE NUMBER	PLY	GAUGE	PRODUCT DESCRIPTION	STITCH	DESIGN	FIT	ACCESSORIES
Igor	M 1719	2	7	Men shawl neck with jacquard pattern and buttons	Combined with plain and ladder back stitch	1*1 rib at cuff, welt and collar with 3 colour way	Semi slim	Assorted buttons



## FRITZ

### MEN DEEP V NECK CARDIGAN, SLIGHTLY CURVED SHAPE WITH BUTTONS AND JACQUARD PATTERNS

Go from intimidating to approachable and casual with the shawl neck of Fritz. The fine detailing with the moss stitch and the colour-coordinated jacquard places you uniquely in the set of your peers.

#### PRODUCT DETAILS

PRODUCT NAME	STYLE NUMBER	PLY	GAUGE	PRODUCT DESCRIPTION	STITCH	DESIGN	FIT	ACCESSORIES
Fritz	M 1715	5	3	Men deep V neck cardigan, slightly curved shape with buttons and jacquard patterns	Combined with moss and jacquard pattern	2*1 cuff, welt and placket with 3 color way and jacquard pattern on sleeves	Semi slim	Assorted buttons

#### SIZE AND WEIGHT

SIZE	XS	S	M	L	XL	2XL	3XL	4XL	5XL
Weight* (gm)	610	630	650	675	700	725	750	775	800





## STAR OF BETHLEHEM

### MEN SHAWL NECK CARDIGAN WITH BUTTONS AND INSERTED POCKETS

Star of Bethlehem lives up to its name by combining the style of a tailored winter sports jacket with the warmth of a cashmere cardigan. Maximise your elegant charm with the soft edges of the shawl neck and keep your hands warm with smartly crafted insert pockets at the front.



#### SIZE AND WEIGHT

SIZE	XS	S	M	L	XL	2XL	3XL	4XL	5XL
Weight* (gm)	450	470	495	520	545	570	595	620	645

#### PRODUCT DETAILS

PRODUCT NAME	STYLE NUMBER	PLY	GAUGE	PRODUCT DESCRIPTION	STITCH	DESIGN	FIT	ACCESSORIES
Star of bethlehem	M 2018	2	7	Men shawl neck cardigan with buttons and inserted pockets	Fully fashioned plain knit all over	1*1 rib at cuff, welt and 2*1 placket	Semi slim	Engraved buttons



## SOLIDASTER

### MEN FULL ZIP MOCK NECK WITH INNER CONTRAST COLLAR

Show-off your built with the zipped Solidaster. The mock neck adds more weight to your shoulders making them look broad and the inner colour-contrasting collar brings that friendly stance as well.

#### PRODUCT DETAILS

PRODUCT NAME	STYLE NUMBER	PLY	GAUGE	PRODUCT DESCRIPTION	STITCH	DESIGN	FIT	ACCESSORIES
Solidaster	M 2004	2	7	Men full zip mock neck with inner contrast collar	Fully fashioned plain knit all over	1*1 rib at cuff, welt and collar with tubular placket	Semi slim	Ykk zipper

#### SIZE AND WEIGHT

SIZE	XS	S	M	L	XL	2XL	3XL	4XL	5XL
Weight* (gm)	380	400	420	440	470	500	530	560	590

# EVERYDAY CARE FOR YOUR CASHMERE

## How to prevent and remove pilling

With every new cashmere garment you should expect a very small amount of 'pilling' to occur, due to the friction of everyday wear against the loose fibres on the knitwear's surface. This is not an indicator of the quality of your knitwear, but it is simply part of the unique character of cashmere, and pilling can be kept to a minimum by gently washing your garment to remove the loose fibres.

Should 'pills' still occur, they can be very easily removed with the use of a special cashmere comb. To comb your cashmere, lay your garment flat, gently and lightly brush the comb over the surface wherever you see pills forming. Pay special attention to areas of your garment that are most susceptible to friction, such as the elbows, underarms, and shoulders.

Even if there is no visible pilling on your knitwear, you should still comb it regularly to remove any loose fibres that may soon lead to pills forming. We also suggest avoiding wearing your cashmere against clothing with a rough texture, with sharp metal necklaces, bracelets or belts, or with rough leather bags, as these can cause your garment to pill or become snagged.

## Ironing or steaming cashmere garments

Should your knitwear become creased, it can be pressed by turning inside-out using an iron on its lowest setting, and by placing a clean, damp cloth in between the garment and your iron. Always keep the iron moving over the garment, but do not allow the iron to come into direct contact with the cashmere.

You can also safely remove creases from cashmere garments with a hand-held steamer. If you have access to a steamer, this is the method that we would recommend.

# CLEANING YOUR CASHMERE

## Dry clean only

We recommend that you take it to a specialist to be dry cleaned. It is also advised that you dry clean your cashmere if it is a woven garment, such as a pashmina; if it is a loose-knit pattern, which could be disturbed by hand-washing; or if it has details such as leather buttons or suede panels.

An added benefit of dry cleaning your cashmere is that clothes moths are strongly adverse to the scent of the products used for dry cleaning. Therefore if you are cleaning your knitwear before placing it into storage, such as over the winter, you may wish to have it dry cleaned beforehand.

# HOW TO STORE CASHMERE KNITWEAR SAFELY

## Storing your cashmere between wears

When you are wearing your cashmere garments regularly, it is preferable to store them between wears by folding them carefully and placing in a clean drawer or on a shelf.

If you'd prefer to hang your knitwear, choose the style of coat hangers that are rounded off towards the ends, like a half-moon shape, to prevent the hanger from stretching and misshaping the shoulders and sleeves on the garment. However in general, it is better to fold your knitwear if you can.

To keep your cashmere knitwear garments fresh and deter moths and mildew, store them with cedar wood balls, a natural alternative to mothballs or anti-moth paper. The balls should be replaced at least once every year.

## Storing your cashmere for a longer period of time

Over the warmer months when you may not be wearing your cashmere knitwear, it is a wise idea to place your garments into a more long-term storage until you are ready to wear them once again.

Before doing so, your cashmere garments should be thoroughly cleaned to prevent attraction by clothes moths. As explained above, in the section 'When to dry clean your cashmere garments', dry cleaning is best in this instance as it is particularly effective in deterring moths.

Choose a clean place for your cashmere storage that is free from damp and away from sunlight, for example a drawer, shelf, or on top of a wardrobe. Store your knitwear only in a breathable, zip-up plastic bag, along with a couple of cedar wood balls to help keep them fresh.

Changes in the ambient temperature over the months can cause condensation inside the plastic storage bags, so we strongly suggest that you do not keep your cashmere garments inside the bags for more than three months.

# LET US CARE FOR YOUR CASHMERE FOR YOU

If you are in any way unsure about how to care for your Cashmere Polo Club knitwear, or do not feel confident cleaning it yourself, you are invited to bring your garments to any of our Cashmere Polo Club stores where we will be pleased to take care of the cleaning for you. If you are unable to visit our stores in person, please do give us a call; we will be able to offer advice over the phone or make arrangements for your cashmere garments to be safely cleaned.

Should your cashmere garment be in need of repair, we can also arrange this for you to give you peace of mind that your treasured knitwear is in safe hands.



LARGEST CASHMERE  
STORE IN THE WORLD



FACTORY  
DIRECT SALES



MADE TO  
MEASURE



ONLINE  
SHOPPING



FRANCHISE  
WELCOME



SOLD BY  
WEIGHT

CUREPIPE | (230) 5942 5312 - ARSENAL | (230) 5941 3463  
POSTE DE FLACQ | (230) 5942 5219 - LE MORNE | (230) 5253 1912

[www.cashmerepoloclub.com](http://www.cashmerepoloclub.com)

MADE IN MAURITIUS